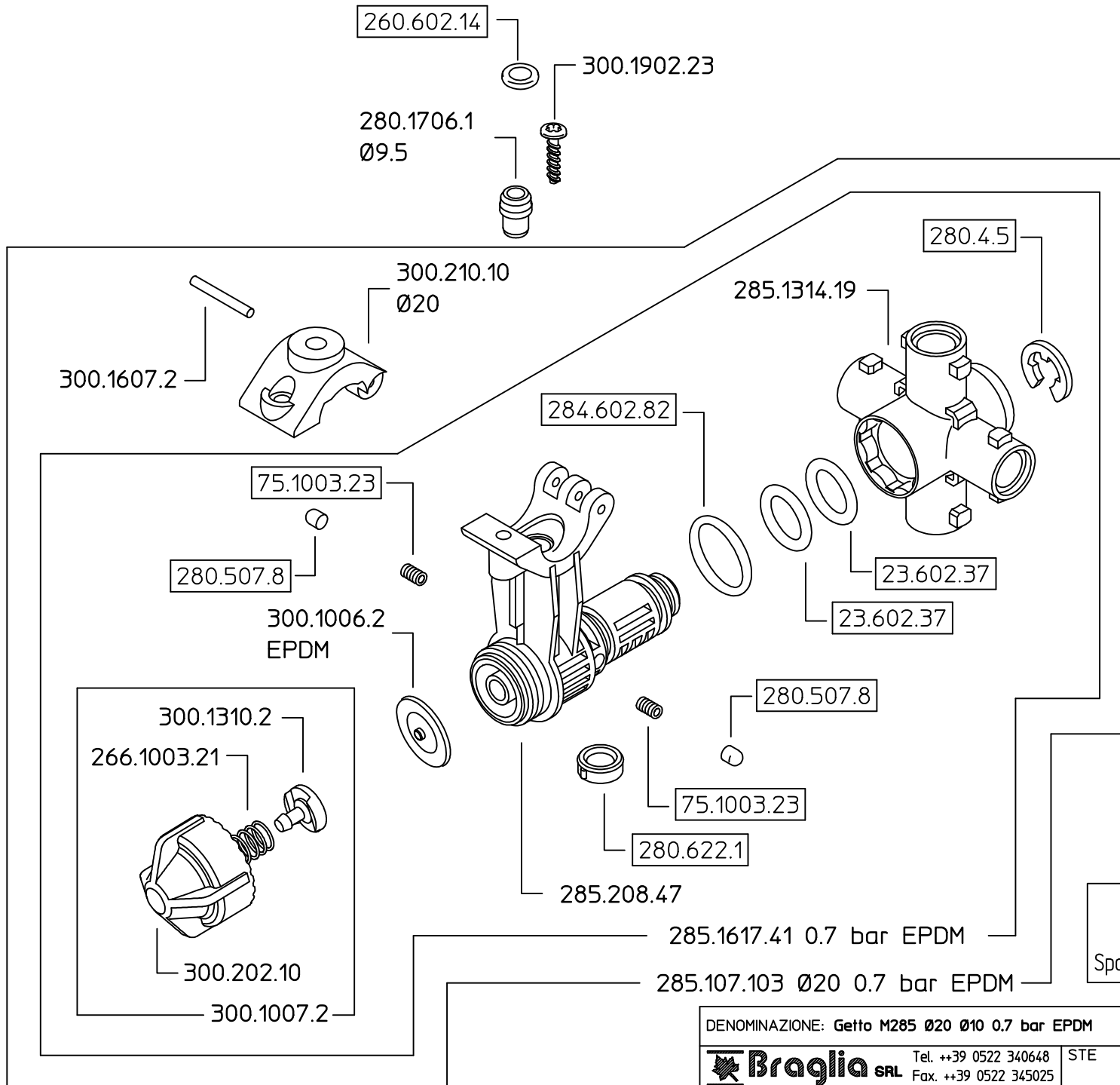



# 285.700.59




Solo per kit  
Only for kit



300.601.31 X4

Come si ordina/How to order  
Kit ricambio-Cod. **280.302.34**  
Spare parts kit-C/N.

DENOMINAZIONE: Getto M285 Ø20 Ø10 0.7 bar EPDM				N°revisione 03	Data revisione: 14/10/05
 <b>Braglia</b> SRL I-42029 Masone (REGGIO EMILIA)-ITALY-UE	Tel. ++39 0522 340648	STE	RTE	Dis.N°/Codice 285.700.59	
	Fax. ++39 0522 345025	Email braglia@braglia.it			