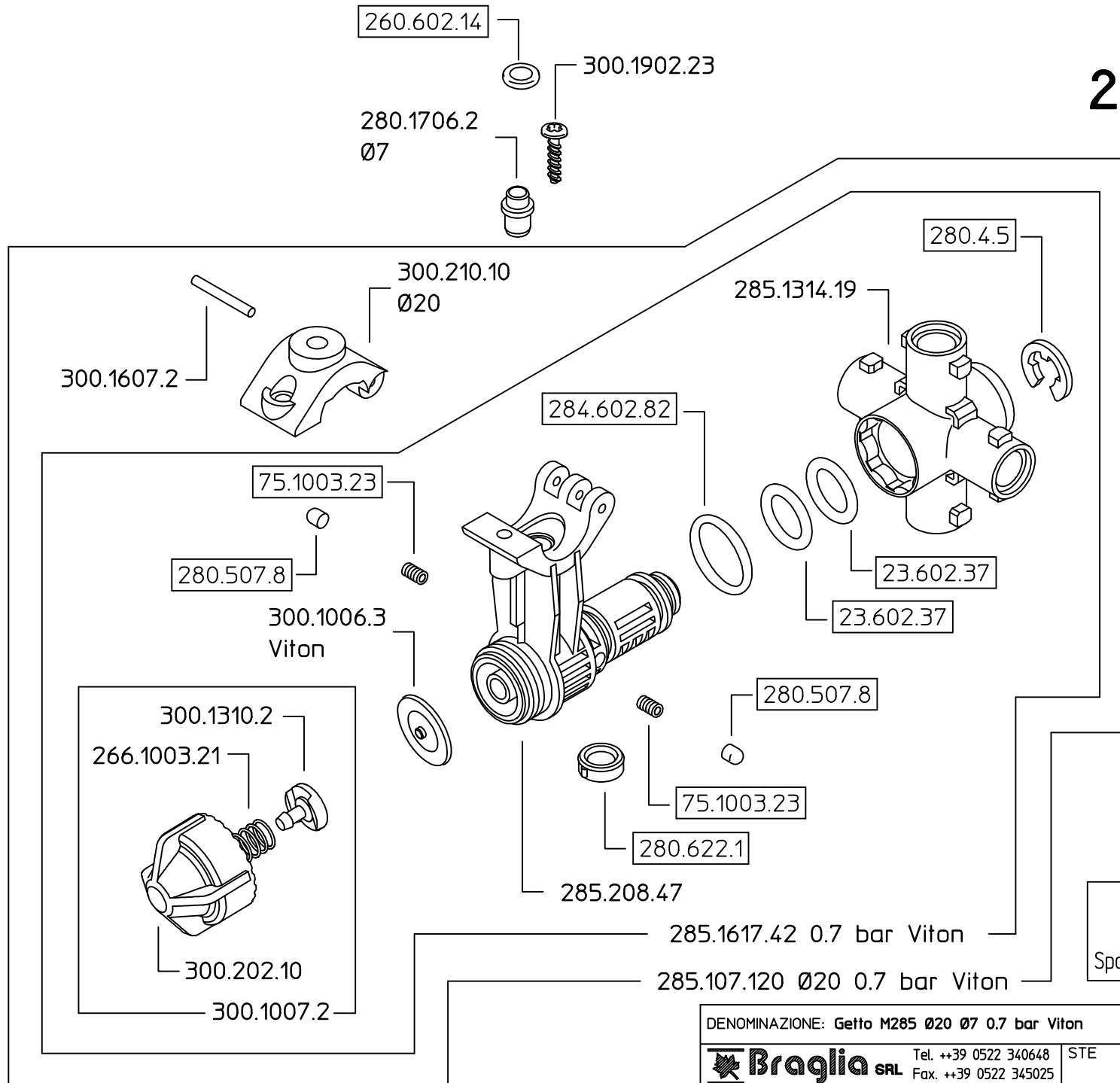



# 285.700.59 C




Solo per kit  
Only for kit



300.601.31 X4

Come si ordina/How to order  
Kit ricambio-Cod. **280.302.34**  
Spare parts kit-C/N.

DENOMINAZIONE: Getto M285 Ø20 Ø7 0.7 bar Viton				N°revisione 02	Data revisione: 14/10/05
 <b>Braglia</b> SRL I-42029 Masone (REGGIO EMILIA)-ITALY-UE	Tel. ++39 0522 340648	STE	RTE	Dis.N°/Codice <b>285.700.59 C</b>	
	Fax. ++39 0522 345025	Email braglia@braglia.it			