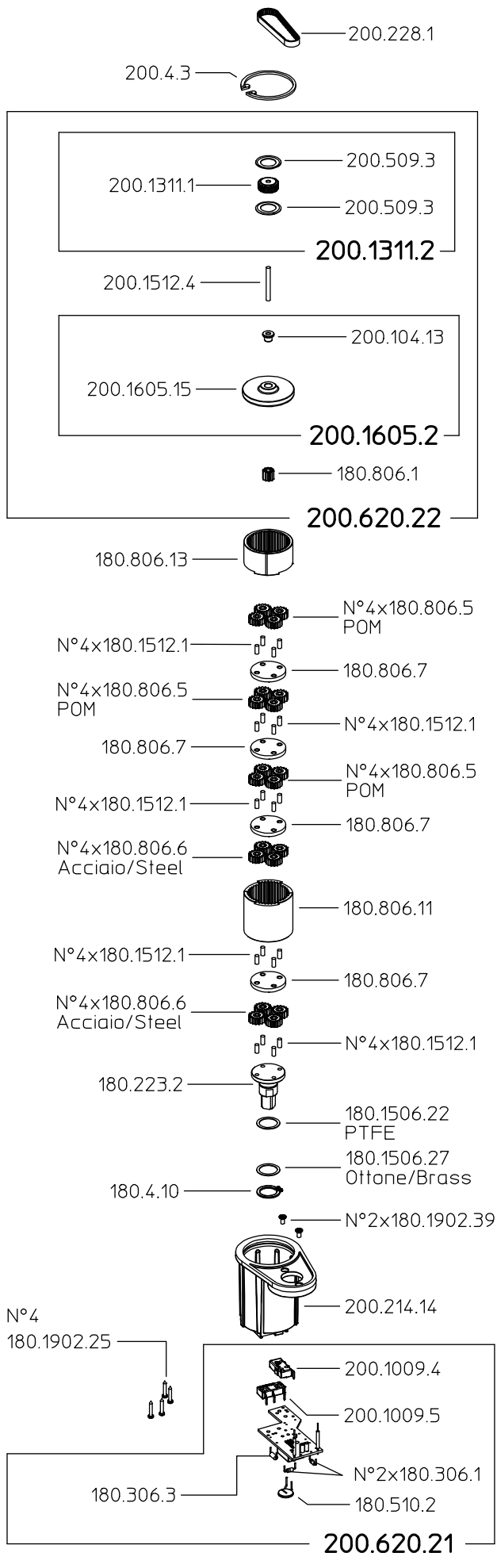
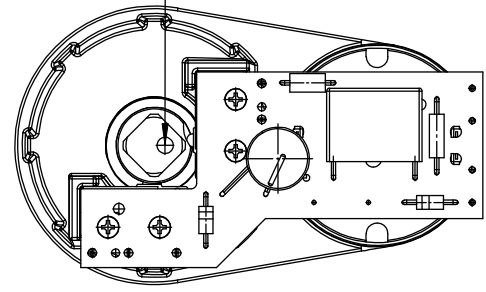


200.620.8

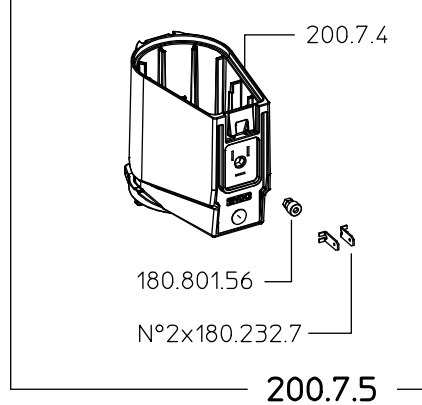
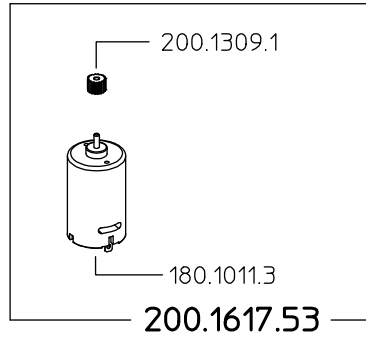
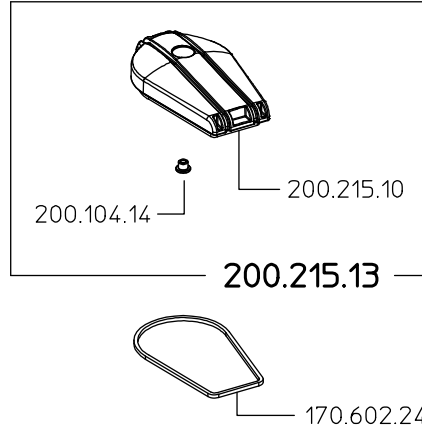
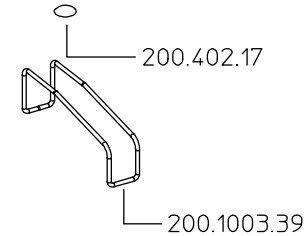
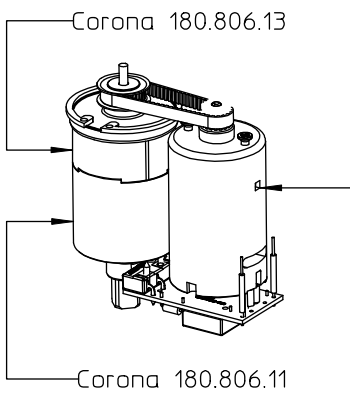
Istruzioni di montaggio e saldatura riportate sulla Specifica Tecnica di Prodotto 200.620.8




Riferimento e posizione partenza Camma 180.223.2



Vista 200.1617.51 senza Cuffia 200.214.14
Posizione montaggio Corone 180.806.11 e 180.806.13
Motore assemblato su Cuffia 200.214.14 con tasca quadrata in questa posizione rispetto al circuito stampato



200.1617.51

DESCRIZIONE: GRUPPO MOTORIDUTTORE M200 0.91RPM/236°		N°revisione 04	Data revisione 09/12/2011
 Tel. +39 0522 340648 Fax. +39 0522 345025 I-42122 REGGIO EMILIA - ITALY - UE Email tecnico@braglia.it		DISEGNATO M.CORRADINI	APPROVATO G.BRAGLIA
		Dis.N°/Codice 200.620.8	