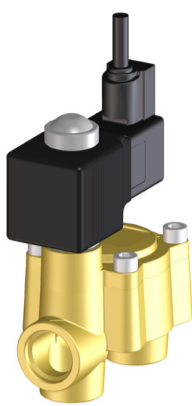




M201



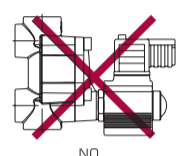
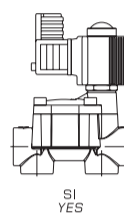
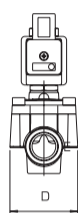
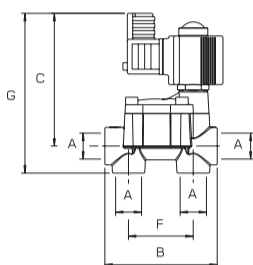
201.1915.3
12Vdc - 27w - 40 bar / 580 psi

201.1915.4
12Vdc - 18w - 20 bar / 290 psi



201.1915.3 SC
12Vdc - 27w - 40 bar / 580 psi

201.1915.4 SC
12Vdc - 18w - 20 bar / 290 psi



← PAGE 19/64 →

CARATTERISTICHE TECNICHE / TECHNICAL FEATURES - 200.1915.3 - 200.1915.3 SC - 200.1915.3 NC

bar psi	l/min-1 bar USG pm-15psi	12Vdc ±10%	A	B mm	C mm	D mm	F mm	G mm	Filtro strainer	Key
40 580	80 21	2A	G1/2F 1/2"BSPM.	89.5	104	54	51.5	127	30 mesh	-10°C - +80°C

CARATTERISTICHE TECNICHE / TECHNICAL FEATURES - 200.1915.4 - 200.1915.4 SC - 200.1915.4 NC

20 290	80 21	1.3A	G1/2F 1/2"BSPM.	89.5	104	54	51.5	127	30 mesh	-10°C - +80°C
-----------	----------	------	--------------------	------	-----	----	------	-----	---------	---------------

Versioni con connettore: standard con LED di segnalazione valvola aperta

Versioni: 201.1915.3 bobina 27W 40 bar connettore DIN43650 A IP 67 cavo 1.5 m costampato 2 poli + terra
 201.1915.4 bobina 18W 20 bar connettore DIN43650 A IP 67 cavo 1.5 m costampato 2 poli + terra
 201.1915.3 SC bobina 27W 40 bar connettore DIN43650 A - ISO4400 PG9 senza cavo
 201.1915.4 SC bobina 18W 20 bar connettore DIN43650 A - ISO4400 PG9 senza cavo
 201.1915.3 NC bobina 27W 40 bar senza connettore e senza cavo
 201.1915.4 NC bobina 18W 20 bar senza connettore e senza cavo

Pressione di esercizio max.: 201.1915.3 - 201.1915.3 SC - 201.1915.3 NC: 40 bar
 201.1915.4 - 201.1915.4 SC - 201.1915.4 NC: 20 bar

Peso: 201.1915.3 1.3 kg - 201.1915.3 SC 1.1 kg - 201.1915.3 NC 1.0 kg
 201.1915.4 1.2 kg - 201.1915.4 SC 1.0 kg - 201.1915.4 NC 0.9 kg

Materiali: ottone - acciaio inox - tenute in FPM - materiali plastici ad alta resistenza

Impiego: su atomizzatori e gruppi irroranti. Applicazioni in campo industriale

- Elettro valvola 12Vdc a solenoide normalmente chiusa (NC) servo azionata a membrana. Chiusura istantanea;
- Bobina a basso assorbimento, orientabile, incapsulata (classe H - 180°) a servizio continuo con doppia tenuta in FPM;
- Foro pilota e passaggi sovra dimensionati. Gruppo pilota in acciaio inox con trattamento nichel chimico e tenute in FPM;
- Valvole da impiegare singolarmente in linea. Due connessioni di entrata e due di mandata configurabili

Models with connector: standard with open valve warning LED

Models: 201.1915.3 27W coil 40 bar (580 psi) DIN43650 A IP 67 connector 1.5 m integrated moulded cable 2 poles + ground
 201.1915.4 18W coil 20 bar (290 psi) DIN43650 A IP 67 connector 1.5 m integrated moulded cable 2 poles + ground
 201.1915.3 SC 27W coil 40 bar (580 psi) DIN43650 A - ISO4400 PG9 connector without cable
 201.1915.4 SC 18W coil 20 bar (290 psi) DIN43650 A - ISO4400 PG9 connector without cable
 201.1915.3 NC 27W coil 40 bar (580 psi) without connector and cable
 201.1915.4 NC 18W coil 20 bar (290 psi) without connector and cable

Max. operating pressure: 201.1915.3 - 201.1915.3 SC - 201.1915.3 NC: 40 bar / 580 psi
 201.1915.4 - 201.1915.4 SC - 201.1915.4 NC: 20 bar / 290 psi

Weight: 201.1915.3 1.3 kg / 2.9 lb - 201.1915.3 SC 1.1 kg / 2.4 lb - 201.1915.3 NC 1.0 kg / 2.2 lb
 201.1915.4 1.2 kg / 2.7 lb - 201.1915.4 SC 1.0 kg / 2.2 lb - 201.1915.4 NC 0.9 kg / 2 lb

Materials: brass - stainless steel - FKM seals - high resistance plastic materials

Use: on airblast sprayers. Industrial applications

- Normally closed (NC) 12Vdc servo operated diaphragm solenoid valve. Instantaneous shut-off;
- Low power consumption continuous duty incapsulated revolving coil (H class 180°) with double FKM seal;
- Oversized pilot and internal holes. Niploy processed stainless steel pilot unit with FKM seal;
- Single unit line use. Two inlets and two outlets.

COME SI ORDINA / HOW TO ORDER

CODICE code	VERSIONE model	CONNETTORE connector	COMPLETO DI CAVO cable supplied	KIT RICAMBIO spare parts kit
201.1915.3	27W - 40bar / 580 psi	DIN 43650 A - IP67	Costampato Integrated moulded	200.302.46
201.1915.4	18W - 20bar / 290 psi	DIN 43650 A - IP67	Costampato Integrated moulded	200.302.46
201.1915.3 SC	27W - 40bar / 580 psi	DIN 43650 A ISO 4400 PG9	NO	200.302.46
201.1915.4 SC	18W - 20bar / 290 psi	DIN 43650 A ISO 4400 PG9	NO	200.302.46
201.1915.3 NC	27W - 40bar / 580 psi	NO	NO	200.302.46
201.1915.4 NC	18W - 20bar / 290 psi	NO	NO	200.302.46



COMANDI
CONTROL UNITS



CATALOGHI
CATALOGUES



RICAMBI
SPARE PARTS :

201.1915.3
201.1915.3 NC
201.1915.3 SC

201.1915.4
201.1915.4 NC
201.1915.4 SC