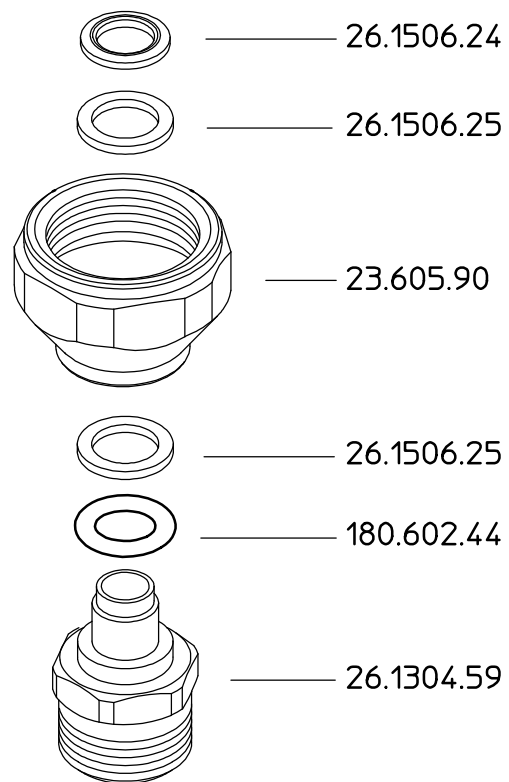



# 23.1502.56



DENOMINAZIONE: <b>Raccordo girevole 1/2-14NPT G3/4 F.</b>		N°revisione <b>00</b>	Data revisione: <b>06/05/05</b>
 <b>Braglia</b> SRL I-42029 Masone (REGGIO EMILIA)-ITALY-UE	Tel. ++39 0522 340648	STE	RTE
	Fax. ++39 0522 345025 Email <a href="mailto:braglia@braglia.it">braglia@braglia.it</a>	<b>Dis.N°/Codice</b> <b>23.1502.56</b>	