



**ALBUZ® ATR 60° CLIPS**  
**ALBUZ® ATR 80° CLIPS**

**ALBUZ**  
ITALIAN  
EXCLUSIVE  
DISTRIBUTOR



300.618.7 EPDM  
300.618.8 FPM/FKM

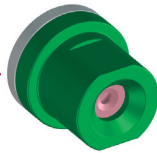


75.605.46 Ø 15

Il convogliatore **verde** identifica l'angolo di **60°**  
The **green** core identifies the **60°** spray angle



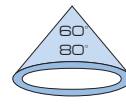
Il convogliatore **grigio** identifica l'angolo di **80°**  
The **grey** core identifies the **80°** spray angle



◀ PAGE 20/43 ▶

**ATTENZIONE!** Non utilizzare guarnizioni per la tenuta.  
Coppia di serraggio ghiera 9-11 Nm

**CAUTION!** Do not use gaskets for spray tip seal.  
Caps torque wrench setting: 9-11 Nm (6.6-8.1 lb ft)



A 5 bar  
At 70 psi

Da 5.0 a 20 bar  
From 70 to 300 psi



**ATR 80° disponibili in ALBUZ® blister (8 ugelli) - COME SI ORDINA: BL+codice ugello**

**Materiali:** materiali plastici ad alta resistenza - allumina

**Impiego:** trattamenti fungicidi ed insetticidi su atomizzatori, a tutto campo o a bande. Consigliato per frutteti e vigneti. Angolo di spruzzo 60° o 80° a cono vuoto. Il convogliatore si innesta all'interno del corpo ugello. I modelli con angolo di spruzzo a 60° riducono la deriva. Le superfici ceramiche lucidate assicurano una tenuta perfetta ed una erogazione precisa. Facilità di smontaggio. Pressione consigliata 10 bar.

**Confezioni ATR 80°:** 100 oppure 8 (blister)

**Confezioni ATR 60°:** 100

**ATR 80° ALBUZ® blister available (8 spray tips) - HOW TO ORDER: BL+spray tip code**

**Materials:** high resistance plastic materials - ceramic

**Use:** fungicide and insecticide spraying on air blast sprayers and boom sprayers. Recommended for orchards and vineyards. Hollow cone 60° or 80° spray angle. Core firmly fits inside the spray tip body. 60° models: reduced drift. Precision polished ceramic surfaces ensure perfect sealing and precise flowrate. Easy to maintain. 10 bar (150 psi) recommended operating pressure.

**Pieces per box ATR 80°:** 100 or 8 (blister)

**Pieces per box ATR 60°:** 100

**PORTATA / FLOW RATE (±5%)**

**COME SI ORDINA / HOW TO ORDER**

**60°**

75.1816.4 LILLA LILAC	75.1816.1 MARRONE BROWN	75.1816.2 GIALLO YELLOW	75.1816.3 ARANCIO ORANGE	75.1816.5 ROSSO RED	75.1816.6 GRIGIO GREY	75.1816.7 VERDE GREEN	75.1816.8 NERO BLACK	75.1816.9 BLU BLUE
-----------------------------	-------------------------------	-------------------------------	--------------------------------	---------------------------	-----------------------------	-----------------------------	----------------------------	--------------------------

**80°**

75.1802.91 BIANCO WHITE	75.1802.92 LILLA LILAC	75.1802.93 MARRONE BROWN	75.1802.94 GIALLO YELLOW	75.1802.95 ARANCIO ORANGE	75.1802.96 ROSSO RED	75.1802.99 GRIGIO GREY	75.1802.97 VERDE GREEN	75.1802.100 NERO BLACK	75.1802.98 BLU BLUE	75.1802.119 VIOLA PURPLE
-------------------------------	------------------------------	--------------------------------	--------------------------------	---------------------------------	----------------------------	------------------------------	------------------------------	------------------------------	---------------------------	--------------------------------

PRESSIONE bar	PRESSIONE psi	75.1816.4		75.1816.1		75.1816.2		75.1816.3		75.1816.5		75.1816.6		75.1816.7		75.1816.8		75.1816.9					
		l/min	USGal/min	l/min	USGal/min	l/min	USGal/min	l/min	USGal/min	l/min	USGal/min	l/min	USGal/min	l/min	USGal/min	l/min	USGal/min	l/min	USGal/min				
5	70	0.27	0.070	0.36	0.093	0.48	0.125	0.73	0.189	0.99	0.257	1.38	0.359	1.50	0.390	1.78	0.463	2.00	0.520	2.45	0.636	3.05	0.792
6	85	0.30	0.076	0.39	0.102	0.52	0.136	0.80	0.213	1.08	0.283	1.51	0.393	1.63	0.430	1.94	0.510	2.18	0.573	2.67	0.701	3.32	0.867
7	100	0.32	0.083	0.42	0.111	0.56	0.148	0.86	0.226	1.17	0.306	1.62	0.425	1.76	0.461	2.09	0.547	2.35	0.615	2.87	0.753	3.57	0.936
8	115	0.34	0.089	0.45	0.119	0.60	0.158	0.92	0.241	1.24	0.326	1.73	0.453	1.87	0.494	2.22	0.587	2.50	0.660	3.06	0.808	3.81	1.002
9	130	0.36	0.094	0.48	0.125	0.64	0.168	0.97	0.256	1.32	0.346	1.83	0.482	1.98	0.526	2.35	0.624	2.64	0.701	3.24	0.856	4.03	1.063
10	150	0.37	0.101	0.50	0.134	0.67	0.180	1.03	0.275	1.39	0.372	1.92	0.515	2.08	0.558	2.47	0.662	2.78	0.745	3.40	0.913	4.23	1.137
11	160	0.39	0.104	0.52	0.138	0.70	0.186	1.07	0.284	1.45	0.384	2.01	0.532	2.17	0.576	2.58	0.684	2.90	0.769	3.56	0.943	4.43	1.172
12	175	0.41	0.109	0.55	0.145	0.73	0.194	1.12	0.297	1.51	0.402	2.09	0.556	2.26	0.603	2.69	0.715	3.03	0.805	3.71	0.986	4.61	1.221
13	190	0.42	0.114	0.57	0.151	0.76	0.203	1.17	0.310	1.57	0.419	2.17	0.576	2.35	0.628	2.79	0.745	3.14	0.839	3.85	1.028	4.79	1.270
14	205	0.44	0.118	0.59	0.157	0.79	0.210	1.21	0.322	1.63	0.435	2.25	0.598	2.43	0.646	2.89	0.767	3.26	0.865	3.99	1.059	4.96	1.317
15	215	0.45	0.121	0.61	0.160	0.81	0.216	1.25	0.329	1.69	0.445	2.33	0.613	2.51	0.662	2.99	0.786	3.36	0.886	4.12	1.085	5.12	1.345
16	235	0.47	0.126	0.63	0.168	0.84	0.225	1.29	0.344	1.74	0.466	2.40	0.634	2.59	0.692	3.08	0.822	3.47	0.926	4.25	1.123	5.28	1.404
17	245	0.48	0.129	0.64	0.171	0.86	0.230	1.33	0.352	1.79	0.475	2.47	0.650	2.67	0.706	3.17	0.834	3.57	0.945	4.37	1.158	5.43	1.430
18	260	0.50	0.133	0.66	0.176	0.89	0.237	1.37	0.362	1.84	0.490	2.54	0.670	2.74	0.723	3.25	0.859	3.67	0.968	4.49	1.186	5.58	1.471
19	275	0.51	0.137	0.68	0.181	0.91	0.244	1.40	0.372	1.89	0.504	2.60	0.683	2.81	0.744	3.34	0.883	3.76	0.995	4.61	1.220	5.73	1.512
20	300	0.52	0.141	0.70	0.187	0.93	0.250	1.44	0.387	1.94	0.521	2.67	0.716	2.88	0.773	3.42	0.918	3.85	1.034	4.72	1.268	5.87	1.577
21	310	0.54	0.145	0.71	0.190	0.95	0.254	1.48	0.393	1.99	0.530	2.73	0.728	2.95	0.786	3.50	0.933	3.94	1.051	4.84	1.289	6.00	1.599
22	320	0.55	0.148	0.73	0.193	0.98	0.258	1.51	0.399	2.03	0.538	2.79	0.740	3.01	0.798	3.57	0.948	4.03	1.068	4.94	1.310	6.14	1.625
23	330	0.56	0.150	0.74	0.196	1.00	0.262	1.54	0.406	2.07	0.546	2.85	0.751	3.07	0.811	3.65	0.963	4.12	1.085	5.05	1.330	6.27	1.648
24	350	0.57	0.152	0.76	0.201	1.02	0.270	1.58	0.417	2.12	0.561	2.91	0.771	3.14	0.831	3.72	0.987	4.20	1.113	5.15	1.364	6.40	1.696
25	365	0.58	0.156	0.77	0.206	1.04	0.276	1.61	0.426	2.16	0.573	2.97	0.787	3.20	0.847	3.80	1.008	4.28	1.137	5.25	1.393	6.53	1.731

**CORRISPONDENZA COLORI ATR 60° - ATR 80° CON ATI 60° / COLOR MATCHING ATR 60° - ATR 80° WITH ATI 60°**

ATI 60°	75.1817.8 VIOLA PURPLE	75.1817.1 75.1817.9 ROSA PINK	75.1817.2 75.1817.10 ARANCIO ORANGE	75.1817.3 75.1817.11 VERDE GREEN	75.1817.4 75.1817.12 GIALLO YELLOW	75.1817.5 75.1817.13 LILLA LILAC	75.1817.6 75.1817.14 BLU BLUE	75.1817.15 BORDEAUX WINE RED	75.1817.7 75.1817.16 ROSSO RED	75.1817.17 MARRONE BROWN
---------	------------------------------	--	--	---	---	---	--	------------------------------------	---	--------------------------------



UGELLI  
SPRAY TIPS



BLISTER



CATALOGHI  
CATALOGUES