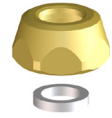




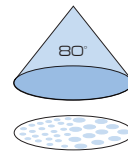
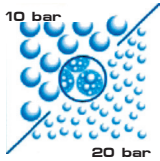
ALBUZ® CVI 80°



**ALBUZ**  
ITALIAN  
EXCLUSIVE  
DISTRIBUTOR



75.605.46 Ø15  
+  
88.601.1



Da 1.5 a 20 bar  
From 20 to 300 psi



**Materiali:** materiali plastici ad alta resistenza - allumina.

**Impiego:** trattamenti con prodotti sistemici e a contatto su atomizzatori. Ugello anti deriva ad iniezione d'aria. Disegno del corpo ugello anti-otturazione con doppio foro di iniezione. Dimensioni compatte (lunghezza 22 mm). **Confezioni da:** 50

**Materials:** high resistance plastic materials - Al<sub>2</sub>O<sub>3</sub> alumina ceramic.

**Use:** application of systemic and contact chemicals on mist blowers. Air injection anti drift spray tip. Anti-blocking design and double air-intake orifice. Compact size (22 mm / 0.87" length). **Pieces per box:** 50

PRESSIONE PRESSURE bar	PORTATA / FLOW RATE (±5%)								
	COME SI ORDINA / HOW TO ORDER								
	236.1814.26 (80075) ROSA PINK	236.1814.8 (8001) ARANCIO ORANGE	236.1814.9 (80015) VERDE GREEN	236.1814.10 (8002) GIALLO YELLOW	236.1814.11 (80025) VIOLA PURPLE	236.1814.12 (8003) BLU BLUE	236.1814.20 (8004) ROSSO RED	236.1814.24 (8005) MARRONE BROWN	236.1814.25 (8006) GRIGIO GREY
	(G1900)	(G1901)	(G1902)						
100 MESH	100 MESH	100 MESH	100 MESH	50 MESH	50 MESH	50 MESH	50 MESH	50 MESH	
l/min	l/min	l/min	l/min	l/min	l/min	l/min	l/min	l/min	
1.5	0.21	0.28	0.42	0.57	0.71	0.85	1.13	1.41	1.70
2	0.24	0.33	0.49	0.65	0.82	0.98	1.31	1.63	1.96
3	<b>0.30</b>	<b>0.40</b>	<b>0.60</b>	<b>0.80</b>	<b>1.00</b>	<b>1.20</b>	<b>1.60</b>	<b>2.00</b>	<b>2.40</b>
4	0.35	0.46	0.69	0.92	1.15	1.39	1.85	2.31	2.77
5	0.39	0.52	0.77	1.03	1.29	1.55	2.07	2.58	3.10
6	0.42	0.57	0.85	1.13	1.41	1.70	2.26	2.83	3.39
7	0.46	0.61	0.92	1.22	1.53	1.83	2.44	3.05	3.67
8	0.49	0.65	0.98	1.31	1.63	1.96	2.61	3.26	3.92
9	0.52	0.69	1.04	1.39	1.73	2.08	2.77	3.46	4.16
10	<b>0.55</b>	<b>0.73</b>	<b>1.09</b>	<b>1.46</b>	<b>1.82</b>	<b>2.19</b>	<b>2.92</b>	<b>3.65</b>	<b>4.38</b>
11	0.57	0.77	1.15	1.53	1.91	2.30	3.06	3.83	4.60
12	0.60	0.80	1.20	1.60	2.00	2.40	3.20	4.00	4.80
13	0.62	0.83	1.25	1.67	2.08	2.50	3.33	4.16	5.00
14	<b>0.65</b>	<b>0.86</b>	<b>1.29</b>	<b>1.73</b>	<b>2.16</b>	<b>2.59</b>	<b>3.46</b>	<b>4.32</b>	<b>5.19</b>
15	0.67	0.89	1.34	1.79	2.24	2.68	3.58	4.47	5.37
16	0.69	0.92	1.38	1.85	2.31	2.77	3.70	4.62	5.54
17	0.71	0.95	1.43	1.90	2.38	2.86	3.81	4.76	5.71
18	0.73	0.98	1.47	1.96	2.45	2.94	3.92	4.90	5.88
19	0.75	1.01	1.51	2.01	2.52	3.02	4.03	5.03	6.04
20	<b>0.77</b>	<b>1.03</b>	<b>1.55</b>	<b>2.07</b>	<b>2.58</b>	<b>3.10</b>	<b>4.13</b>	<b>5.16</b>	<b>6.20</b>
21	0.79	1.06	1.59	2.12	2.65	3.17	4.23	5.29	6.35
22	0.81	1.08	1.62	2.17	2.71	3.25	4.33	5.41	6.50
23	0.83	1.11	1.66	2.22	2.77	3.32	4.43	5.53	6.65
24	0.85	1.13	1.70	2.26	2.83	3.39	4.53	5.65	6.79
25	0.87	1.15	1.73	2.31	2.89	3.46	4.62	5.77	6.93

