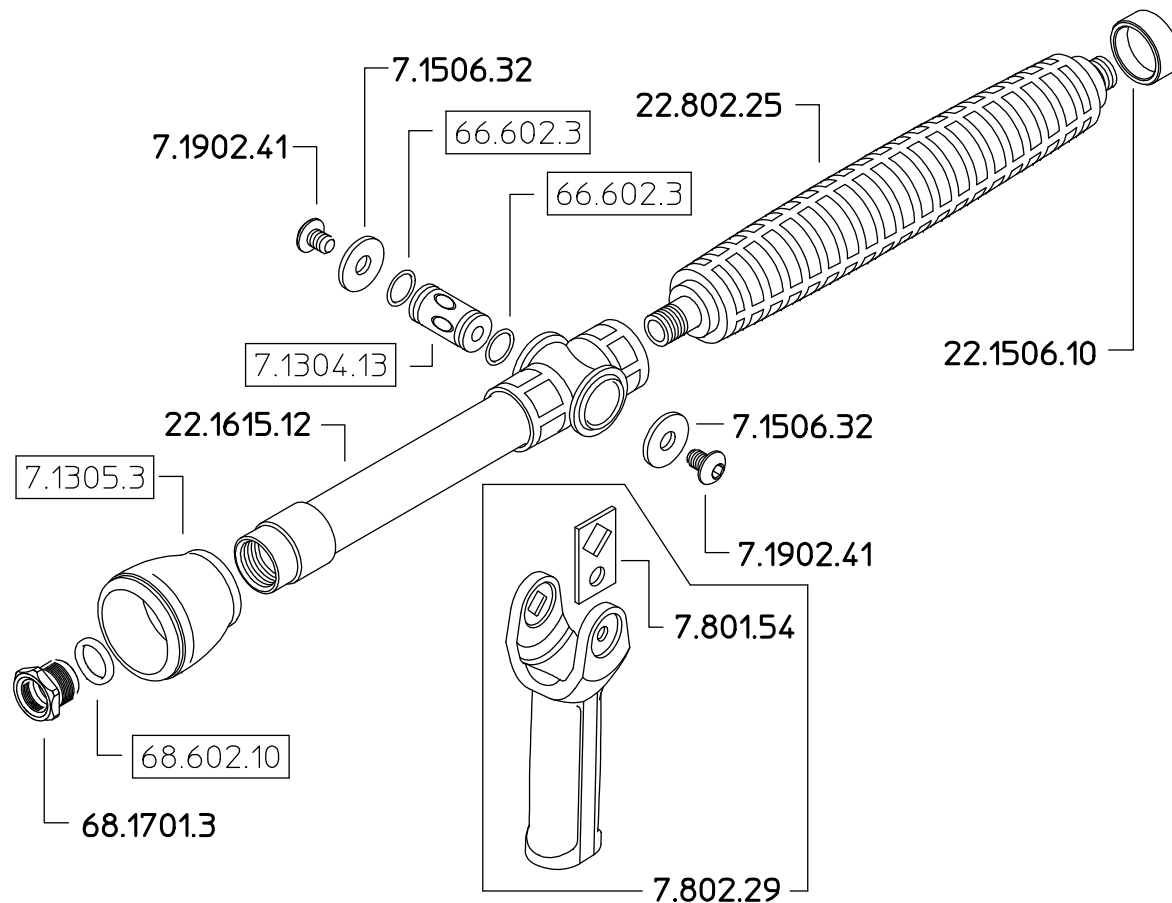
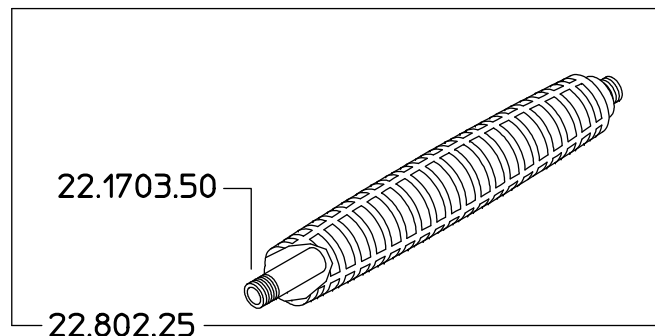
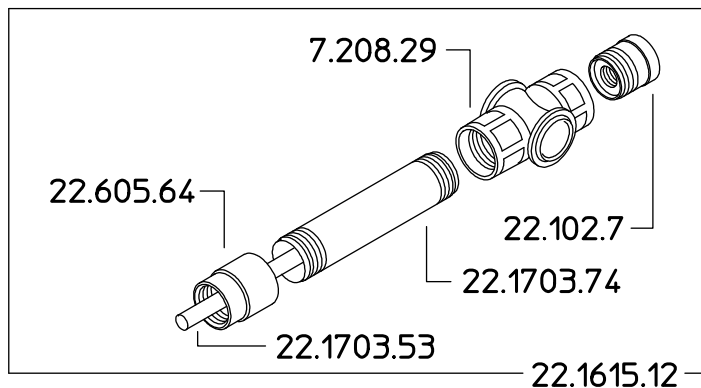


22.1617.73



NOTE DI MONTAGGIO:
-Utilizzare collante sigillafili
LOXEAL 56-03 sulle filettature.

DENOMINAZIONE: Sottoinsieme lavaggio MV			N°revisione 00	Data revisione: 07/06/10
 Braglia SRL I-42029 Masone (REGGIO EMILIA)-ITALY-UE	Tel. ++39 0522 340648	STE	RTE	Dis.N°/Codice 22.1617.73
	Fax. ++39 0522 345025			
Email braglia@braglia.it				