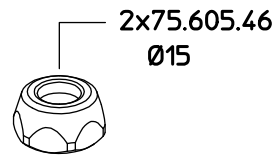
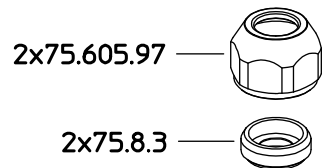


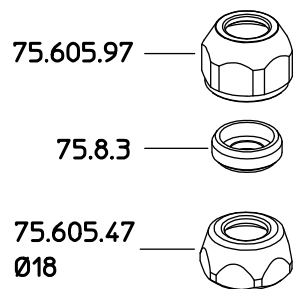
Variante B / B Option



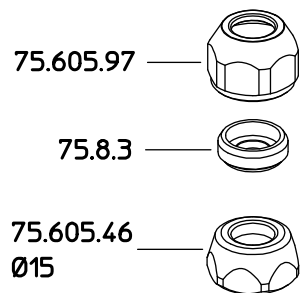
Variante D / D Option



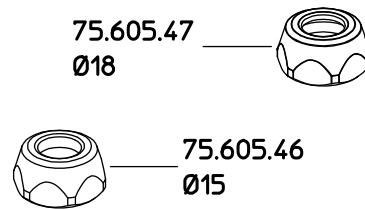
Variante E / E Option



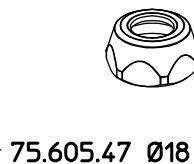
Variante F / F Option



Variante A / A Option



Variante standard / Standard option

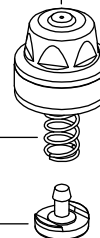


75.605.61

266.1003.15

75.1310.12

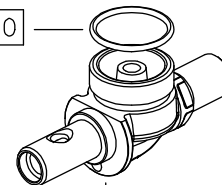
300.1006.3



75.1007.8

75.602.40

73.602.22



65.229.1

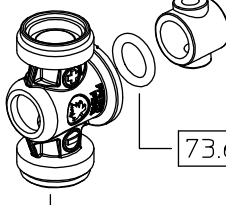
73.507.1
35-40 cNm

73.209.1

Thread sealant
LOXEAL 56-03



75.1902.24
3-4 Nm



65.1314.39

73.602.22

75.507.9

73.507.1
35-40 cNm

65.112.4

65.1617.60

65.111.13

Variante standard / Standard option



75.605.47 Ø18

65.627.1

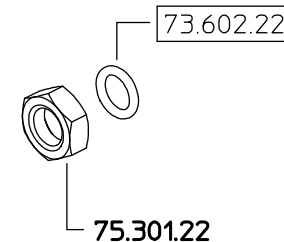
65.627.1 A

65.627.1 B

65.627.1 D

65.627.1 E

65.627.1 F



Solo per kit
For kit only



23.602.34 X2

68.602.10

73.602.22 X2

260.602.14 X2

COME SI ORDINA/HOW TO ORDER

Kit ricambio
Spare parts kit **75.302.28**

DESCRIZIONE: **GETTO M65 G1/4M. Ø18**

N°revisione
03 Data revisione
23/01/2012

Braglia SRL Tel. +39 0522 340648
Fax. +39 0522 345025
I-42122 REGGIO EMILIA - ITALY - UE Email tecnico@braglia.it

DISEGNATO
G.BRAGLIA

APPROVATO
G.BRAGLIA

Dis.N°/Codice

65.627.1