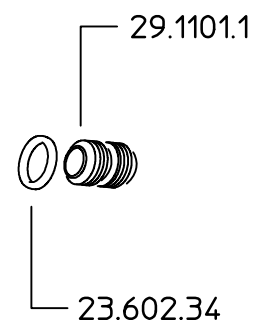
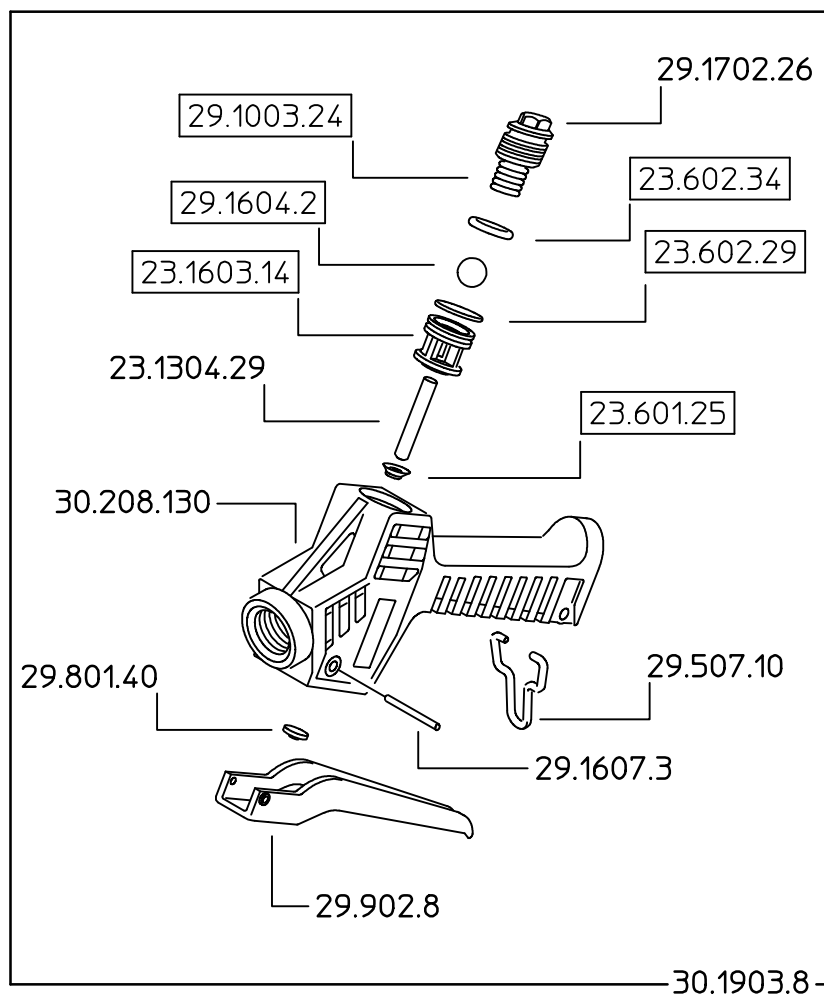


30.1903.6



Come si ordina/How to order
 Kit ricambio-Cod. **30.302.25**
 Spare parts kit-C/N. **30.302.25**

Percorso file 3D:			
DENOMINAZIONE: Valvola M30 G1/2 M.			N°revisione 05
			Data revisione: 12/10/05
	Tel. ++39 0522 340648	STE	RTE
	Fax. ++39 0522 345025		
I-42029 Masone (REGGIO EMILIA)-ITALY-UE Email braglia@braglia.it			Dis.N°/Codice 30.1903.6