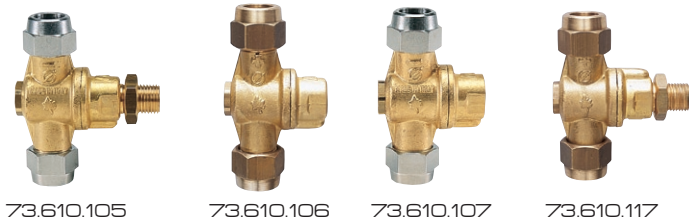




# M73 SELEZIONE M73 ROLLOVER

POSIZIONAMENTO  
E TENUTA SENZA COLLANTI  
ADJUST NOZZLE POSITION  
AND SEAL WITHOUT BONDING



73.610.105

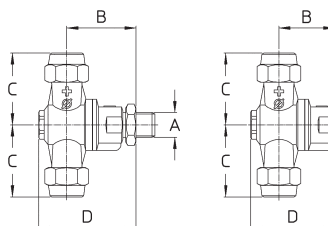
73.610.106

73.610.107

73.610.117



G1/4M.-1/4"BSPM  
Dado con O Ring  
Nut with O Ring



256.605.7  
G3/8 3/8"BSPF



73.605.68  
11/16-16 UN



73.605.27  
G3/8 3/8"BSPF  
73.605.28  
11/16-16 UN

**Standard completo di ghiera - ugelli non compresi - opzioni con filtro**

Pressione di esercizio max.: 40 bar

Peso: G1/4M. 190 g - 1/4"NPTF. 160 g

**Materiali:** ottone - acciaio inox - NBR - PVC

**Impiego:** su atomizzatori. Due ugelli selezionabili con posizioni intermedie di chiusura. Due posizioni "APERTO" inclinate  $\pm 15^\circ$  dalla verticale. Ogni posizione è segnalata da uno scatto.

**Standard with caps - spray tips not included - strainer options**


Max. operating pressure.: 40 bar / 600 psi

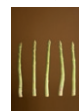
Weight: 1/4"BSPM. 190 g / 6.5 oz. - 1/4"NPTF. 60 g / 5.5 oz

**Materials:** brass - stainless steel - Buna N - PVC

**Use:** on air blast sprayers. Rollover to select spray tips with two shut off positions. Two "OPEN" positions at  $\pm 15^\circ$  from vertical. A click point out each position.

## COME SI ORDINA / HOW TO ORDER

CODICE code	GHIERA cap	PER UGELLI for spray tips	FILTRO strainer	A	B mm	C mm	D mm		KIT RICAMBIO spare parts kit
73.610.105	G3/8M.-Ch20	Ø 15 KIT	X	G1/4M. 1/4"BSPM	37	38	52	10	70.302.27
73.610.105 A	G3/8M.-Ch20	Ø 15 KIT	-						
73.610.105 B	G3/8M. ALETTATA 3/8"BSPM. WINGED	Ø 15 KIT	-						
73.610.105 C	G3/8M. ALETTATA 3/8"BSPM. WINGED	Ø 15 KIT	X	1/4NPTF.	30	40	45	10	70.302.27
73.610.106	11/16 16UN-Ch21	Ø 15 KIT disc+core	X						
73.610.106 A	11/16 16UN-Ch21	Ø 15 KIT disc+core	-						
73.610.106 B	11/16 16UN ALETTATA WINGED	Ø 15 KIT disc+core	-	G1/4M. 1/4"BSPM	37	40	52	10	70.302.27
73.610.106 C	11/16 16UN ALETTATA WINGED	Ø 15 KIT disc+core	X						
73.610.107	G3/8M.-Ch20	Ø 15 KIT	X						
73.610.107 A	G3/8M.-Ch20	Ø 15 KIT	-	1/4NPTF.	30	38	45	10	70.302.27
73.610.107 B	G3/8M. ALETTATA 3/8"BSPM. WINGED	Ø 15 KIT	-						
73.610.107 C	G3/8M. ALETTATA 3/8"BSPM. WINGED	Ø 15 KIT	X						
73.610.117	11/16 16UN-Ch21	Ø 15 KIT disc+core	X	G1/4M. 1/4"BSPM	37	40	52	10	70.302.27
73.610.117 A	11/16 16UN-Ch21	Ø 15 KIT disc+core	-						
73.610.117 B	11/16 16UN ALETTATA WINGED	Ø 15 KIT disc+core	-						
73.610.117 C	11/16 16UN ALETTATA WINGED	Ø 15 KIT disc+core	X						



UGELLI  
TIPS