



M76

POSIZIONAMENTO
E TENUTA SENZA COLLANTI
ADJUST NOZZLE POSITION
AND SEAL WITHOUT BONDING



76.617.32
76.617.32 15



76.617.31
76.617.31 15



76.617.36
76.617.36 15



G1/4M.-1/4" BSPM
Dado con O Ring
Nut with O Ring



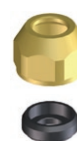
76.617.29



76.617.30



76.617.37
76.617.40



Kit ghiera AD/AC
AD/AC cap kit



75.605.46 Ø15
75.605.47 Ø18



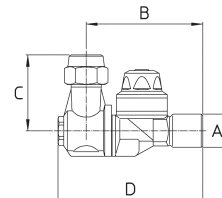
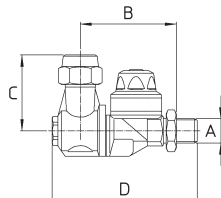
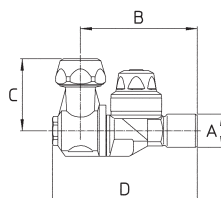
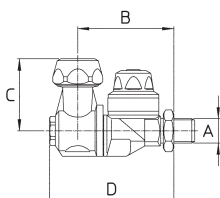
73.605.27
G3/8 3/8" BSPF
73.605.28
11/16-16 UN



256.605.7
G3/8 3/8" BSPF



73.605.68
11/16-16 UN



Standard: versioni Ø18 e Ø15 complete di ghiera - ugello non compreso
versioni G3/8 e 11/16-16UN complete di ghiera - ugello non compreso- opzioni con filtro

Pressione di esercizio max.: 40 bar
Peso: G1/4M. 230 g / 8 oz - G1/4F. 230 g - G3/8M. 245 g - 1/4"NPTF. 230 g

Materiali: ottone - acciaio inox - NBR - FPM - PVC

Impiego: su atomizzatori. Due posizioni "APERTO" inclinate 15° dalla verticale. Ogni posizione è segnalata da uno scatto. Antigoccia resistente ed efficace a bassa e ad alta pressione.

Standard: Ø18 and Ø15 models with cap - spray tip not included
3/8" BSP and 11/16-16UN models with hex. cap - spray tip not included - strainer options

Max. operating pressure.: 40 bar / 600 psi
Weight: 1/4" BSPM. 230 g / 8 oz - 1/4" BSPF. 230 g / 8 oz - 3/8" BSPM. 245 g / 8.5 oz - 1/4" NPTF. 230 g / 8 oz


Materials: brass - stainless steel - Buna N - FKM - PVC

Use: on air blast sprayers. Two "OPEN" positions at ±15° from vertical. A click point out each position. Check valve assures efficient and long lasting operations at low and high pressures.





COME SI ORDINA / HOW TO ORDER

CODICE code	GHIERA cap	PER UGELLI for spray tips	FILTRO strainer	A	B mm	C mm	D mm		KIT RICAMBIO spare parts kit
76.617.29	G3/8 M-Ch20	Ø15 KIT	X			38		10	
76.617.29 A	G3/8 M-Ch20	Ø15 KIT	-			38		10	
76.617.29 B	G3/8 M. ALETTATA 3/8" BSPM. WINGED	Ø15 KIT	-			38		10	
76.617.29 C	G3/8 M. ALETTATA 3/8" BSPM. WINGED	Ø15 KIT	X			38		10	
76.617.30	11/16 16UN-Ch21	Ø15 KIT disc+core	X			40		10	
76.617.30 A	11/16 16UN-Ch21	Ø15 KIT disc+core	-	G1/4M. 1/4" BSPM	51	40	66	10	75.302.28
76.617.30 B	11/16 16UN ALETTATA 11/16 16UN WINGED	Ø15 KIT disc+core	-			40		10	
76.617.30 C	11/16 16UN ALETTATA 11/16 16UN WINGED	Ø15 KIT disc+core	X			40		10	
76.617.32	Ø18-Ch24	Ø18 KIT	-			38		10	
76.617.32 D	AD/AC	AD/AC	-			38		10	
76.617.32 15	Ø15-Ch24	ATR/TVI	-			38		10	
76.617.36	Ø18-Ch24	Ø18 KIT	-	G3/8M-G1/8F.					
76.617.36 D	AD/AC	AD/AC	-	3/8" BSPM. 1/8" BSPF.	51	38	66	10	75.302.28
76.617.36 15	Ø15-Ch24	ATR/TVI	-						
76.617.31	Ø18-Ch24	Ø18 KIT	-			38		10	
76.617.31 D	AD/AC	AD/AC	-			38		10	
76.617.31 15	Ø15-Ch24	ATR/TVI	-			38		10	
76.617.37	1/16 16UN-Ch21	Ø15 KIT disc+core	X			40		10	
76.617.37 A	1/16 16UN-Ch21	Ø15 KIT disc+core	-	G1/4F. 1/4" BSPF.	62	40	77	10	75.302.28
76.617.37 B	11/16 16UN ALETTATA 11/16 16UN WINGED	Ø15 KIT disc+core	-			40		10	
76.617.37 C	11/16 16UN ALETTATA 11/16 16UN WINGED	Ø15 KIT disc+core	X			40		10	
76.617.40	11/16 16UN-Ch21	Ø15 KIT disc+core	X			40		10	
76.617.40 A	11/16 16UN-Ch21	Ø15 KIT disc+core	-			40		10	
76.617.40 B	11/16 16UN ALETTATA 11/16 16UN WINGED	Ø15 KIT disc+core	-	1/4"NPTF.	62	40	77	10	75.302.28
76.617.40 C	11/16 16UN ALETTATA 11/16 16UN WINGED	Ø15 KIT disc+core	X			40		10	

