

**M271 - M272 - M273****TENUTA SENZA COLLANTI
SEAL WITHOUT BONDING**

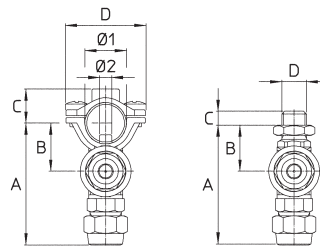
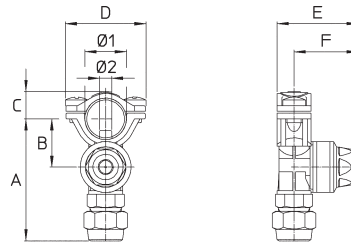
271.619.1




272.619.2



273.619.3

**M273**
Dado con O Ring
Nut with O Ring**M271 - Standard completo di cavallotto, viti inox, membrana FPM, O Ring, ghiera G3/8.
Ugello non compreso****M272 - Standard completo di cavallotto M8, viti inox, membrana FPM, O Ring, ghiera G3/8.
Ugello non compreso****M273 - Standard completo di dado G1/4, O Ring, membrana FPM, ghiera G3/8.
Ugello non compreso**Pressione di esercizio max.: 30 bar
Apertura antigoccia: 1 bar
Peso: M271 190 g - M272 195 g - M273 150 g**Materiali:** ottone nichelato - acciaio inox - FPM - NBR**Impiego:** su barre diserbanti. Ingombri ridotti. Eccellente resistenza alla pressione ed agli urti. Indicato per trattamenti che richiedono elevata penetrazione fogliare.**M271 - Standard with clamp, stainless steel screws, FKM diaphragm, O Ring, 3/8" BSP cap.
Spray tip not included****M272 - Standard with M8 clamp, stainless steel screws, FKM diaphragm, O Ring, 3/8" BSP cap.
Spray tip not included****M273 - Standard with 1/4" BSP nut, O Ring, FKM diaphragm, 3/8" BSP cap.
Spray tip not included**Max. operating pressure.: 30 bar / 450 psi
Antidrip opens at 1 bar / 15 psi
Weight: M271 190 g / 6.6 oz - M272 195 g / 6.8 oz - M273 150 g / 5.2 oz**Materials:** nickel plated brass - stainless steel - FKM - Buna N**Use:** on crop protection booms. Compact. Pressure and shock proof. For high pressure on post emergence.**COME SI ORDINA / HOW TO ORDER**

CODICE code	Ø1 mm	Ø2 mm	A mm	B mm	C mm	D mm	E mm	F mm	
271.619.1	1/2" (Ø21.3) - Ø22	Ø7	65	26	15	42	44	34	10
272.619.2	1/2" (Ø21.3) - Ø22	Ø7	65	26	18	42	44	34	10
273.619.3	-	-	64	25	8	G1/4M-1/4" BSPM.	-	34	10



PAGE 78

UGELLI
TIPS

PAGE 87