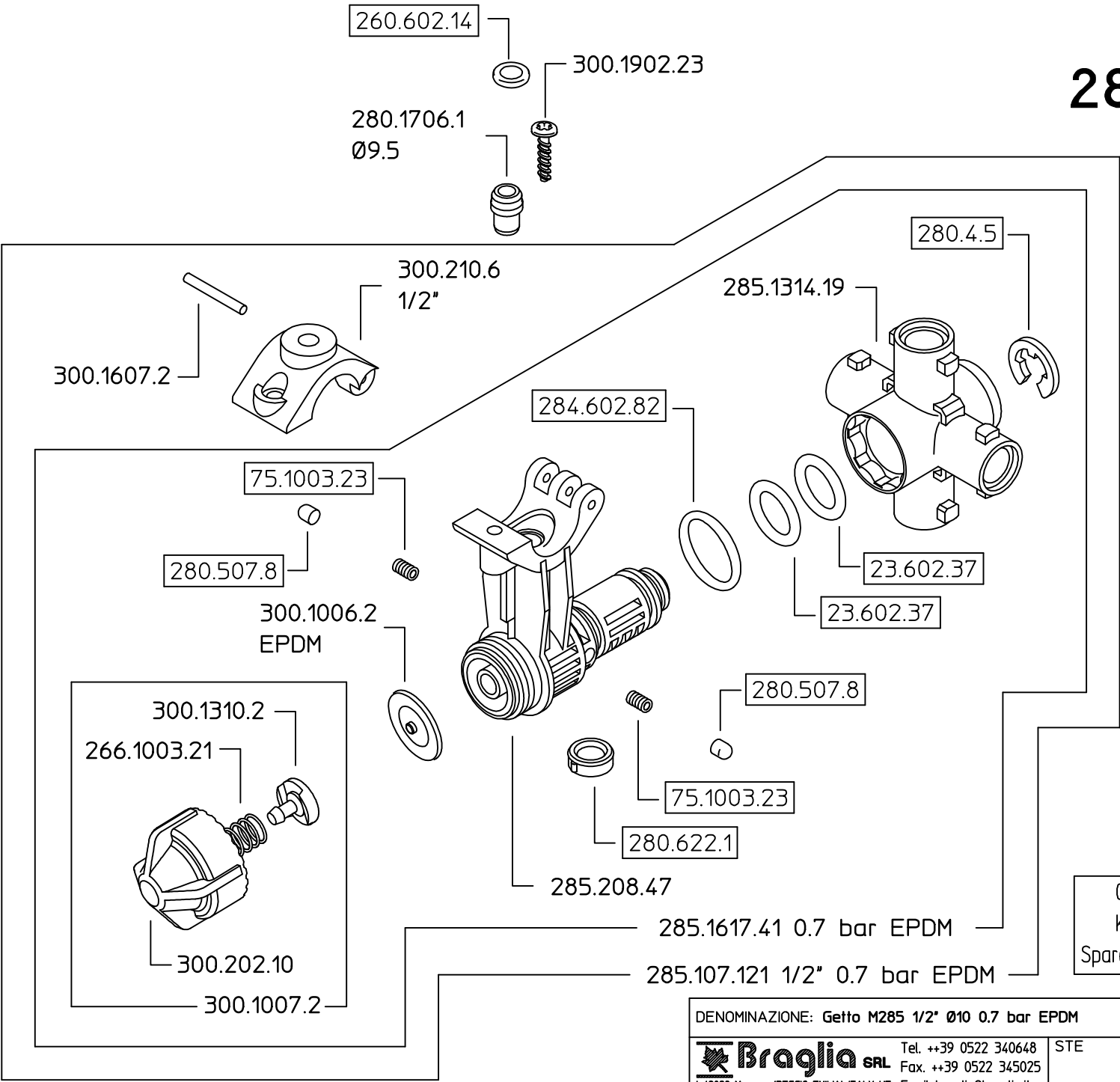



285.700.59 D




Solo per kit
Only for kit



300.601.31 X4

Come si ordina/How to order
Kit ricambio-Cod. **280.302.34**
Spare parts kit-C/N.

DENOMINAZIONE: Getto M285 1/2" Ø10 0.7 bar EPDM				N°revisione 02	Data revisione: 14/10/05
 Braglia SRL I-42029 Masone (REGGIO EMILIA)-ITALY-UE	Tel. ++39 0522 340648	STE	RTE	285.700.59 D	
	Fax. ++39 0522 345025				
Email braglia@braglia.it					