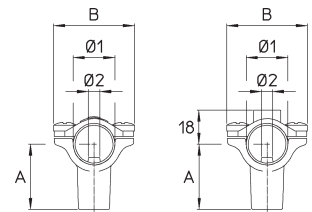




MORSETTI / CLAMPS



267.612.177 (Ø22 1/2) 267.612.17 (Ø22 1/2) 267.612.178 267.612.18
 267.612.1 (Ø20) 267.612.17 20 (Ø20)

Standard nichelati - completi di viti inox e O Ring

Pressione di esercizio max.: 50 bar

Peso: 267.612.1 65 g - 267.612.177 62 g - 267.612.17 20 70 g - 267.612.17 70 g - 267.612.178 67 g - 267.612.18 75 g

Materiali: ottone nichelato - acciaio inox - NBR

Impiego: su gruppi da diserbo ed atomizzatori. Leggeri e resistenti, consentono il montaggio di getti, ugelli e manometri.

Standard nickel plated with stainless steel screws and O Ring

Max. operating pressure: 50 bar / 725 psi

Weight: 267.612.177 62 g / 2.2 oz - 267.612.17 70 g / 2.5 oz - 267.612.178 67 g / 2.4 oz - 267.612.18 75 g / 2.6 oz - 267.612.1 65 g / 2.29 oz - 267.612.17 20 / 2.47 oz

Materials: nickel plated brass - stainless steel - Buna N

Use: on booms and air blast sprayers. Light and resistant. For nozzles, spray tips and pressure gauges.

COME SI ORDINA / HOW TO ORDER

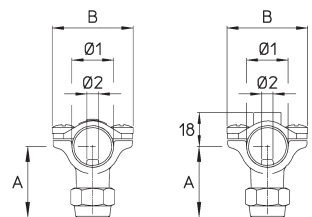
CODICE code	Ø1 mm	Ø2 mm	FILETTATURA thread	FILETTATURA CAVALLOTTO clamp thread	A mm	B mm	
267.612.1	Ø20	Ø7		-	25	42	25
267.612.177	Ø22 - Ø21.3	Ø7		-	25		
267.612.17	Ø22 - Ø21.3	Ø7		-	34.5		
267.612.17 20	Ø20	Ø7	G1/4F. 1/4" BSPF.	-	34.5		
267.612.178	Ø22 - Ø21.3	Ø7		M8	25		
267.612.18	Ø22 - Ø21.3	Ø7		M8	34.5		

GETTO MORSETTO 1/2" 1/2" CLAMP NOZZLES



265.612.176

265.612.179



Standard nichelati

Completati di ghiera, viti inox e O Ring

Ugello non compreso

Pressione di esercizio max.: 50 bar

Peso: 85 g

Materiali: ottone nichelato - acciaio inox - NBR

Impiego: su gruppi da diserbo.

Standard nickel plated

With cap, stainless steel screws and O Ring

Spray tip not included

Max. operating pressure: 50 bar / 725 psi

Weight: 85 g / 3 oz

Materials: nickel plated brass - stainless steel - Buna N

Use: on spray booms.

COME SI ORDINA / HOW TO ORDER

CODICE code	Ø1	Ø2	FILETTATURA thread	FILETTATURA CAVALLOTTO clamp thread	A mm	B mm	
265.612.176	Ø22 - Ø21.3	Ø7	G3/8M.-3/8" BSPM.		38	42	25
265.612.179	Ø22 - Ø21.3	Ø7	G3/8M.-3/8" BSPM.	M8	38	42	25



UGELLI
TIPS