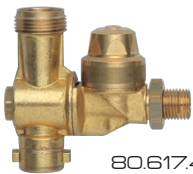


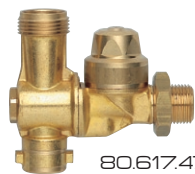


M80

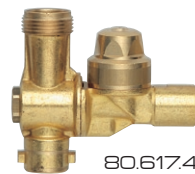
POSIZIONAMENTO
E TENUTA SENZA COLLANTI
ADJUST NOZZLE POSITION
AND SEAL WITHOUT BONDING



80.617.46



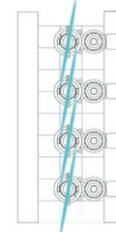
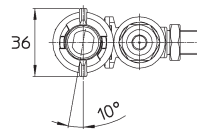
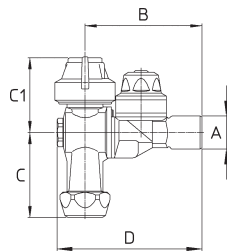
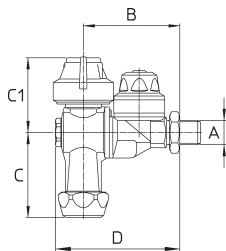
80.617.47



80.617.48



G1/4M.-1/4" BSPM
Dado con O Ring
Nut with O Ring



Standard senza ghiera, ugelli e filtri - 80.617.46 e 80.617.47 completi di dado

Pressione di esercizio max.: 25 bar

Peso: G1/4M. 250 g - G3/8M. 250 g - G1/4F. 265 g

Materiali: ottone - acciaio inox - NBR - FPM - PVC

Impiego: su atomizzatori. Attacco a baionetta per il montaggio auto allineante (orientato 10°) delle ghiera per gli ugelli anti deriva AVI "Albuz" e ID Lechler. Attacco filettato per il montaggio a scelta delle ghiera per gli ugelli ATR o Ø18 "Albuz". Sul lato con attacco a baionetta è possibile il montaggio dei filtri a cupola 256.508.13 e 256.508.14. Ugelli selezionabili con posizioni intermedie di chiusura. Due posizioni "APERTO" inclinate ±15° dalla verticale. Ogni posizione è segnalata da uno scatto. Antigoccia resistente ed efficace a bassa e ad alta pressione.

Standard without caps, spray tips and strainers - 80.617.46 and 80.617.47 with nut


Max. operating pressure: 25 bar / 360 psi

Weight: 1/4" BSPM. 250 g / 8.8 oz. - 3/8" BSPM. 250 g / 8.8 oz - 1/4" BSPF. 265 g / 9.4 oz

Materials: brass - stainless steel - Buna N - FKM - PVC

Use: on air blast sprayers. Bayonet quick cap connection, with automatic 10° orientation, fits no drift AVI "Albuz" and ID Lechler spray tips. Threaded cap connection fits ATR and Ø18 "Albuz" spray tips. The quick connection side fits cup strainers 256.508.13 and 256.508.14. Rollover to select spray tips with two shut off positions. Two "OPEN" positions at ±15° from vertical. A click point out each position. Check valve assures efficient and long lasting operations at low and high pressures.

COME SI ORDINA / HOW TO ORDER

CODICE code	PER UGELLI for spray tips	A	B mm	C mm	C1 mm	D mm		KIT RICAMBIO spare parts kit
80.617.46	AVI/ID-ISO Ch8	G1/4M.-1/4" BSPM.	51	45	39.5	67	10	
80.617.47	Ø18	G3/8M.-3/8" BSPM.	51	45	39.5	67	10	75.302.28
80.617.48	ATR	G1/4F.-1/4" BSPF.	62	45	39.5	78	10	



80.618.38
Nero / Black




80.618.39
Oro / Gold



75.605.46
75.605.47

COME SI ORDINA / HOW TO ORDER

GHIERA + GUARNIZIONE cap + gasket	SOLO GHIERA cap only	SOLO GUARNIZIONE gasket only	PER UGELLI for spray tips	
80.618.38 (Nero/Black)	80.605.88	300.601.31-EPDM	ID-ISO Ch8 Lechler	25
80.618.39 (Oro/Gold)	80.605.89	300.601.31-EPDM	AVI "Albuz"	25
	75.605.46	-	ATR "Albuz"	10
	75.605.47	-	Ø18 "Albuz"	10



256.508.13

PAGE 78



UGELLI
TIPS

PAGE 87