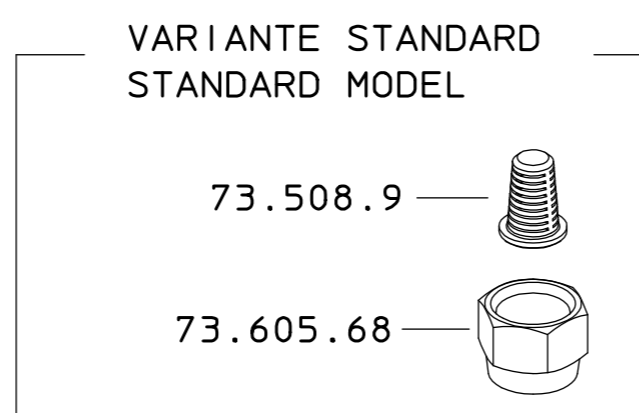
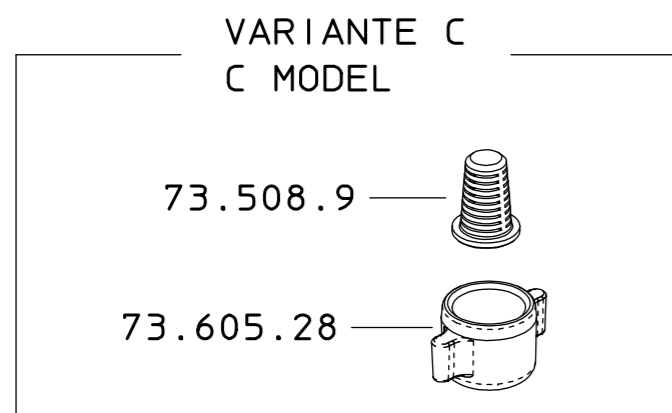
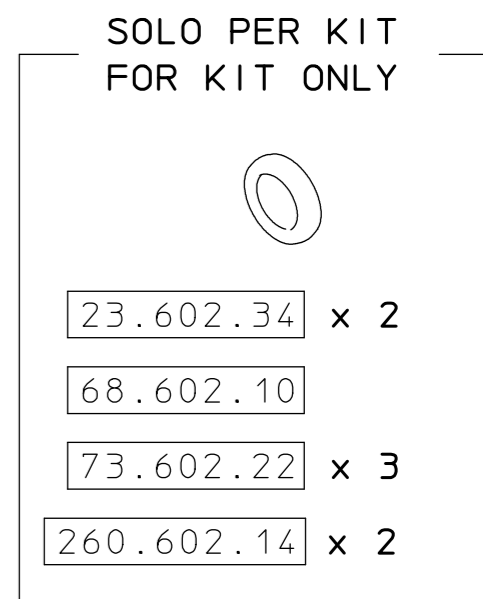
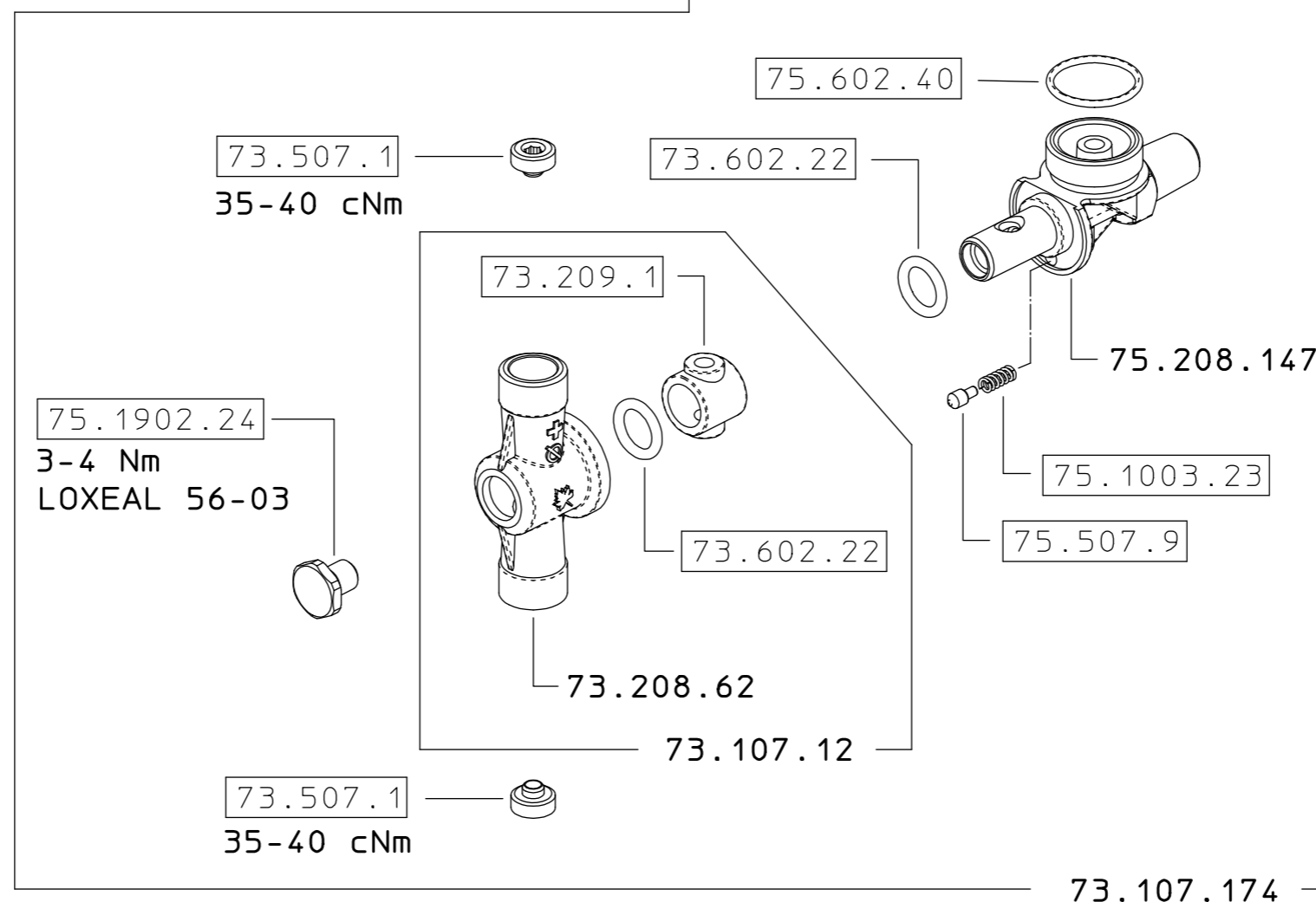
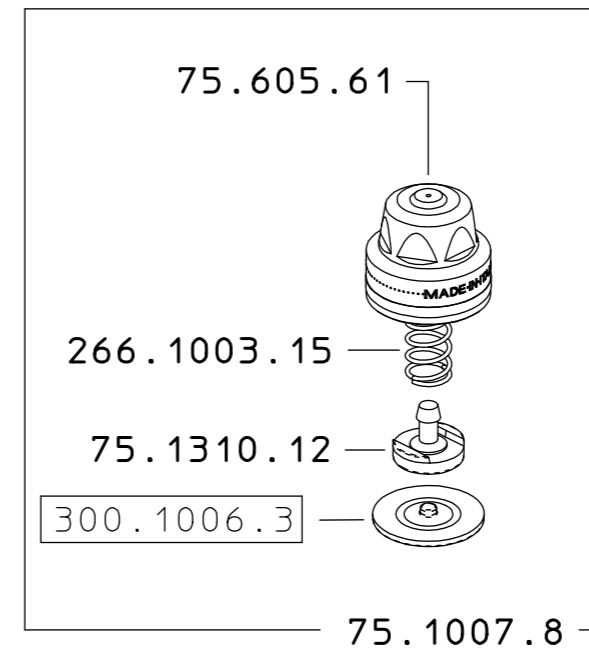
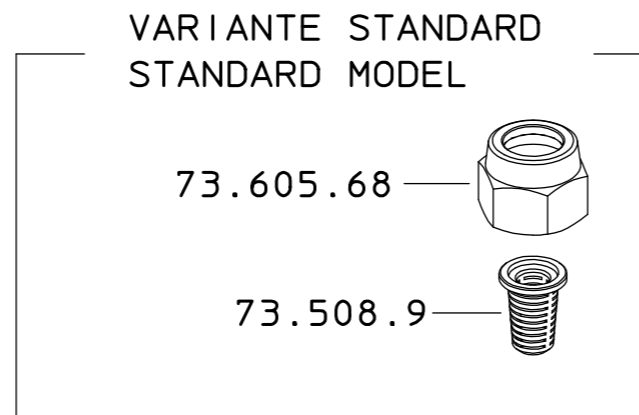
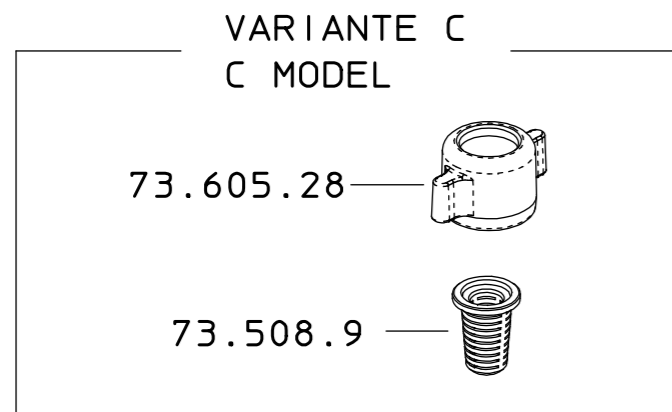


**ATTENZIONE - IMPORTANTE**  
 73.617.45 C per un cliente USA deve essere consegnato  
 con 73.508.9 e 73.605.28 assemblati sul 73.107.174  
 Chiedere al responsabile commerciale di competenza

**73.617.45**  
**73.617.45 C**



COME SI ORDINA/HOW TO ORDER  
 Kit ricambio  
 Spare parts kit **75.302.28**

DESCRIZIONE: <b>GETTO M73 ANT. 11/16UN 1/4"NPTM. STD</b>		N°revisione <b>04</b>	Data revisione <b>06/08/2015</b>
<b>Braglia</b> SRL Tel. +39 0522 340648 Fax. +39 0522 345025 I-42122 REGGIO EMILIA - ITALY - UE Email tecnico@braglia.it	DISEGNATO <b>A.BRAGLIA</b>	APPROVATO <b>G.BRAGLIA</b>	Dis.N°/Codice <b>73.617.45</b>