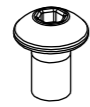


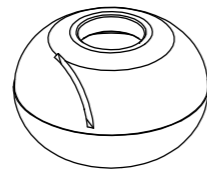
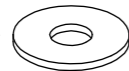
166.1514.7

166.1902.45
LOXEAL 56.03

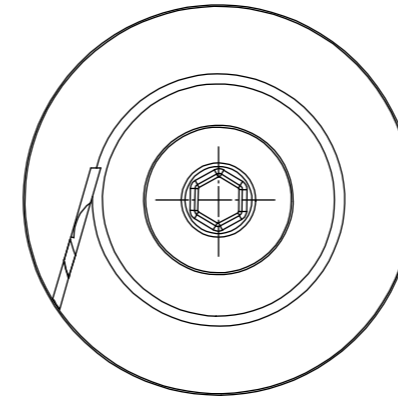
Non forzare. Serraggio manuale a battuta
Don't apply force. Manual stop tightening



166.1506.35



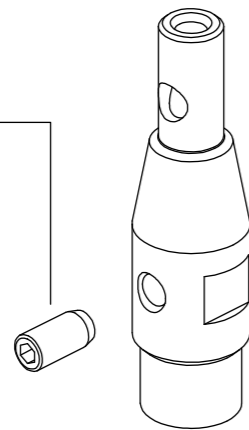
166.1604.33



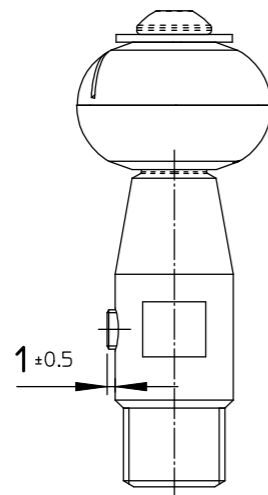
Posizione di montaggio 166.1604.33
Rotazione oraria in lavoro Scala 2:1

166.1604.33 assembling position
Clockwise spraying rotation Scale 2:1

166.1902.46
LOXEAL 56.03



166.1304.16



1±0.5

166.1902.46
SET DI FABBRICA
FACTORY SET

COLLAUDO FINALE

La sfera deve ruotare liberamente a 1 bar
Controllare portata pesata circa 11 l/min a 3 bar
QUALITY CONTROL TEST

The ball must rotate freely at 1 bar
Check weighed flow rate approx. 11 l/min at 3 bar

AL TERMINE DELL'IRRORAZIONE ESEGUIRE SEMPRE UN CICLO
DI LAVAGGIO PER 15/20s UTILIZZANDO ACQUA PULITA
AT THE END OF THE SPRAYING JOB ALWAYS RUN A WASHING
CYCLE LASTING 15/20s USING CLEAN WATER

DESCRIZIONE: ROLLEX 360° G1/4M. BASSA PORTATA		N°revisione 03	Data revisione 12/02/2024
 Braglia SRL I-42122 REGGIO EMILIA - ITALY - UE Email tecnico@braglia.it	Tel. +39 0522 340648 Fax. +39 0522 345025	DISEGNATO A.BRAGLIA	APPROVATO G.BRAGLIA
	Dis.N°/Codice 166.1514.7		