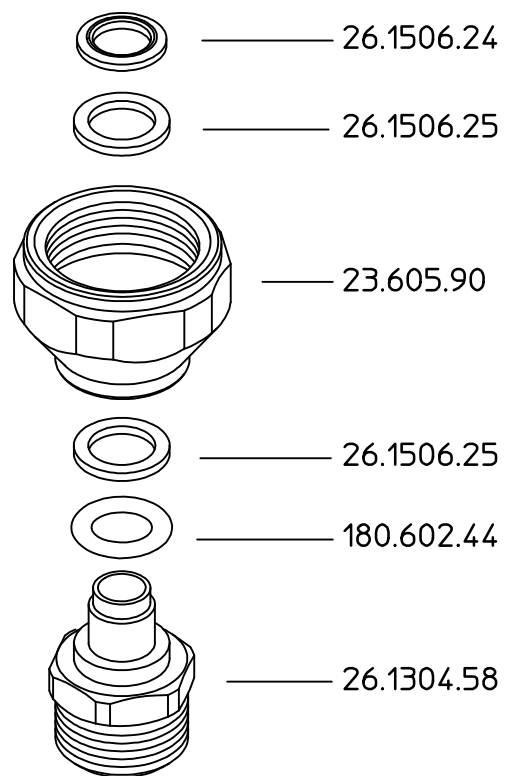



# 23.1502.53



DENOMINAZIONE: Raccordo girevole G3/4 F. G1/2 M.		N°revisione 00	Data revisione: 26/09/02
 <b>Braglia SRL</b> I-42029 Masone (REGGIO EMILIA)-ITALY-UE	Tel. ++39 0522 340648 Fax. ++39 0522 345025 Email braglia@braglia.it	STE	RTE
	Dis.N°/Codice 23.1502.53		