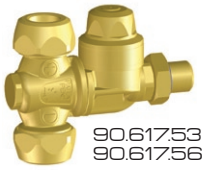




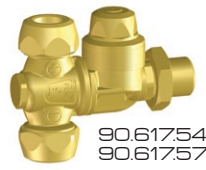
# M90



**POSIZIONAMENTO  
E TENUTA SENZA COLLANTI  
ADJUST NOZZLE POSITION  
AND SEAL WITHOUT BONDING**



90.61753  
90.61756



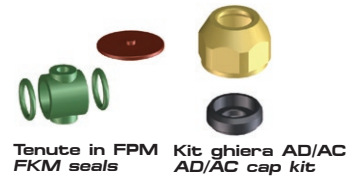
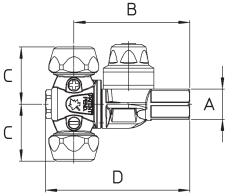
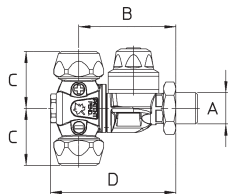
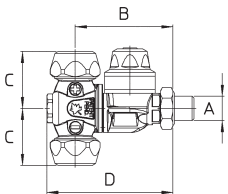
90.61754  
90.61757



90.61755  
90.61758



**G1/4M.-1/4" BSPM**  
Dado con O Ring  
Nut with O Ring



Tenute in FPM  
FKM seals      Kit ghiera AD/AC  
AD/AC cap kit

**Standard completi di ghiera. Ugelli non compresi**  
Ghiera per ugelli: Kit Ø15, Kit Ø18, ALBUZ® ATR/TVI, ALBUZ® AD/AC

**Versioni con attacco G1/4M.: standard dado G1/4F. con O Ring FPM**  
**Versioni con attacco G3/8M. - G1/8F.: standard completi di dado**

Pressione di esercizio max.: 40 bar

Peso: G1/4M. 255 g - G3/8M. 270 g - G1/4F. 255 g

**Materiali:** ottone - acciaio inox - FPM

**Impiego:** su atomizzatori. Due ugelli selezionabili con posizione intermedia di chiusura. Ingombri ridotti. Due posizioni di spruzzo inclinate di 20°. Posizioni segnalate da uno scatto. Antigoccia resistente ed efficace in un ampio range di pressioni. Dimensioni di passaggio del fluido ampliate per ridurre le perdite di carico e per migliorare la durata. Resistenza chimica migliorata con l'impiego di tenute in FPM. Versioni con attacco G1/4M. forniti con dado e O Ring per il montaggio orientato del getto sui collettori senza utilizzare collanti.

**Standard with caps. Spray tips not included**  
Available nuts for: Ø15 kit, Ø18 kit, ATR/TVI ALBUZ®, AD/AC ALBUZ® spray tips

**1/4" BSPM. models: standard with 1/4" BSPF. nut and FKM O Ring**  
**3/8" BSPM. - 1/8" BSPF. models: standard complete with nut**


Max. operating pressure: 40 bar / 580 psi

Weight: 1/4" BSPM. 255 g / 9 oz - 3/8" BSPM. 270 g / 9.5 oz - 1/4" BSPF. 255 g / 9 oz

**Materials:** brass - stainless steel - FKM

**Use:** on air blast sprayers. Very compact rollover to select spray tips with two shut off positions. Two "OPEN" positions at ±20° from vertical. A click point out each position. Check valve assures efficient and long lasting operations at low and high pressures. Low pressure drops. Improved chemical resistance with FKM seals. 1/4" BSPM. boom connection models with nut and O Ring to adjust nozzle position on booms without bonding.

## COME SI ORDINA / HOW TO ORDER

CODICE code	GHIERA cap	PER UGELLI for spray tips	A	B mm	C mm	D mm		KIT RICAMBIO spare parts kit
90.61753	2xØ18	Ø18 kit	G1/4M. 1/4" BSPM	51	30	66	10	90.302.59
90.61753 A	1xØ18-1xØ15	Ø18 kit-ATR/TVI						
90.61753 B	2xØ15	ATR/TVI						
90.61753 D	2xAD/AC	AD/AC						
90.61753 E	1xAD/AC-1xØ18	AD/AC-Ø18 kit						
90.61753 F	1xAD/AC-1xØ15	AD/AC-ATR/TVI						
90.61754	2xØ18	Ø18 kit	G3/8M. G1/8F. 3/8" BSPM. 1/8" BSPF.	51	30	66	10	90.302.59
90.61754 A	1xØ18-1xØ15	Ø18 kit-ATR/TVI						
90.61754 B	2xØ15	ATR/TVI						
90.61754 D	2xAD/AC	AD/AC						
90.61754 E	1xAD/AC-1xØ18	AD/AC-Ø18 kit						
90.61754 F	1xAD/AC-1xØ15	AD/AC-ATR/TVI						
90.61755	2xØ18	Ø18 kit	G1/4F. 1/4" BSPF.	62	30	76	10	90.302.59
90.61755 A	1xØ18-1xØ15	Ø18 kit-ATR/TVI						
90.61755 B	2xØ15	ATR/TVI						
90.61755 D	2xAD/AC	AD/AC						
90.61755 E	1xAD/AC-1xØ18	AD/AC-Ø18 kit						
90.61755 F	1xAD/AC-1xØ15	AD/AC-ATR/TVI						
90.61756	2xØ15	Ø15 kit-ATR/TVI	G1/4M. 1/4" BSPM.	51	30	66	10	90.302.59
90.61756 D	2xAD/AC	AD/AC						
90.61756 E	1xAD/AC-1xØ15	AD/AC-Ø15 kit-ATR/TVI						
90.61757	2xØ15	Ø15 kit-ATR/TVI	G3/8M.-G1/8F. 3/8" BSPM. 1/8" BSPF.	51	30	66	10	90.302.59
90.61757 D	2xAD/AC	AD/AC						
90.61757 E	1xAD/AC-1xØ15	AD/AC-Ø15 kit-ATR/TVI						
90.61758	2xØ15	Ø15 kit-ATR/TVI	G1/4F. 1/4" BSPF.	62	30	76	10	90.302.59
90.61758 D	2xAD/AC	AD/AC						
90.61758 E	1xAD/AC-1xØ15	AD/AC-Ø15 kit-ATR/TVI						