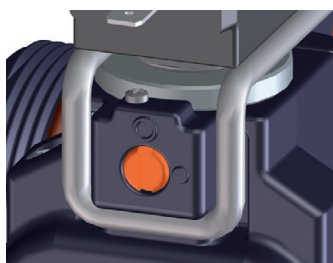




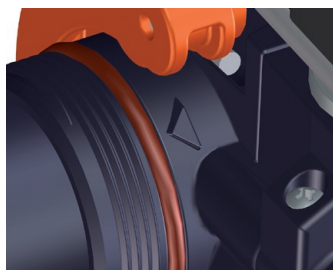
VALVOLA M205 / M205 VALVE



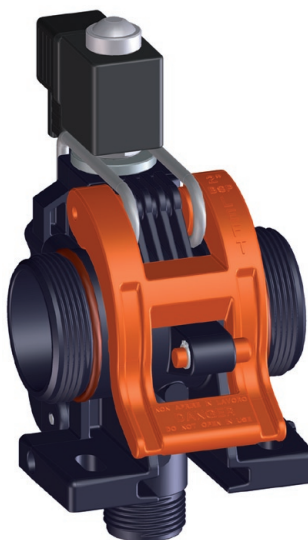
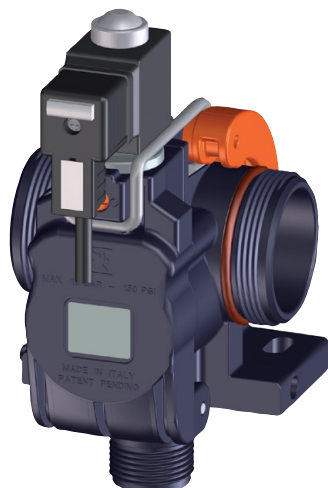
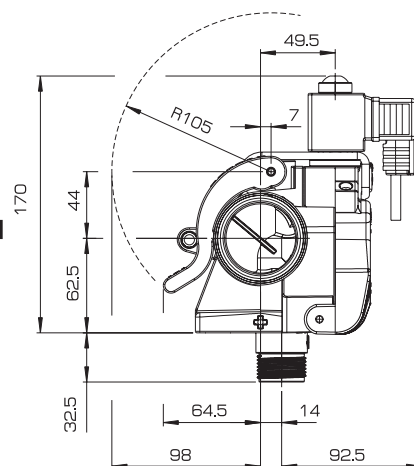
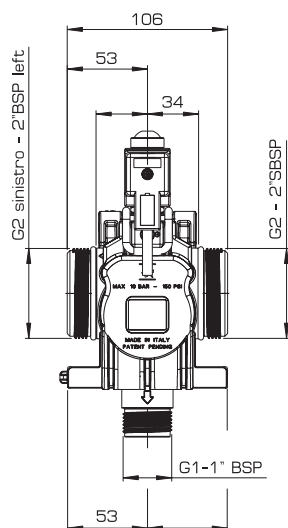
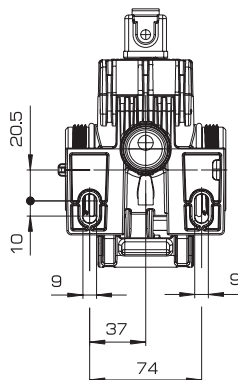
Posizione di lavoro
Working position



Apertura manuale d'emergenza
Manual emergency valve opening



Riferimento lato G2 sinistro
2" BSP left thread side reference





Standard completa di bobina 10W 12Vdc e due O Ring 158 (Ø53.98x3.53) FPM

Versioni:

- 205.1915.5** completa di connettore DIN43650 A IP 67 cavo 1.5 m costampato 2 poli + terra con LED di segnalazione valvola aperta
- 205.1915.5 A** completa di connettore DIN43650 A - ISO4400 PG9 senza cavo con LED di segnalazione valvola aperta
- 205.1915.5 B** senza connettore e cavo

Pressione di esercizio max.: 10 bar

Peso: 205.1915.5 1.05 kg - 205.1915.5 A 0.96 kg - 205.1915.5 B 0.93 kg

Materiali: materiali plastici ad alta resistenza - acciaio inox - tenute in FPM

Impiego: su macchine per trattamenti a tutto campo

- elettro valvola modulare a solenoide 12Vdc normalmente chiusa (NC). Servo azionata a membrana. Chiusura istantanea
- bobina a basso assorbimento, incapsulata (classe H - 180°) a servizio continuo con doppia tenuta in FPM
- gruppo pilota in acciaio inox con trattamento nichel chimico e tenute in FPM
- foro pilota e sezioni di alimentazione sovra dimensionate determinano perdite di carico molto basse per l'impiego anche con pompe centrifughe
- sistema modulare con unico collettore di alimentazione
- configurabile con gli accessori disponibili per ottenere gruppi assemblati compatti
- numero ridotto di componenti. Semplifica l'ispezione e la manutenzione in campo.

Non richiede l'intervento di tecnici specializzati

- accesso rapido ai componenti interni con l'apertura della leva (dotata di fermo di sicurezza) incernierata sul corpo valvola
- dispositivo di apertura e chiusura manuale di emergenza
- elevata resistenza all'usura e alla corrosione

Standard with 10W 12Vdc coil and two FKM O Rings 158 (Ø53.98x3.53 mm)

Models:

- 205.1915.5** complete with DIN43650 A IP 67 connector 1.5 m integrated moulded cable 2 poles + ground. Open valve warning LED
- 205.1915.5 A** complete with DIN43650 A - ISO4400 PG9 connector without cable. Open valve warning LED
- 205.1915.5 B** without connector and cable

Max. operating pressure: 10 bar / 150 psi






Weight: 205.1915.5 1.05 kg / 2.3 lb - 205.1915.5 A 0.96 kg / 2.1 lb - 205.1915.5 B 0.93 kg / 2.05 lb

Materials: high resistance plastic materials - stainless steel - FKM seals

Use: on boom sprayers

- normally closed (NC) 12Vdc servo operated diaphragm solenoid valve. Instantaneous shut-off
- low power consumption continuous duty incapsulated coil (H class 180°) with double FKM seal
- Niploy processed stainless steel pilot unit with FKM seal
- oversized piloting bore and internal holes for low pressure drop even with high flow rate centrifugal pumps
- modular system with built in manifold for one only inlet
- modular compact assembly with suitable accessories
- reduced number of internal parts. **User friendly field inspection and maintenance**
- quick internal parts access with simple lever rotation (fitted with safety lock)
- manual emergency on/off device
- high wear and corrosion resistance

CARATTERISTICHE TECNICHE / TECHNICAL FEATURES

 bar psi	 l/min - perdita di carico USG pm - pressure drop	 12Vdc +- 10%	 Filtro Strainer	 -10°C - +80°C
10 150	70 l/min - 0.3 bar 110 l/min - 0.7 bar 18 USGal/min - 4.4 psi 29 USGal/min - 10.2 psi	0.8A	25 mesh	

COME SI ORDINA / HOW TO ORDER

CODICE code	CONNETTORE connector	COMPLETO DI CAVO cable supplied	KIT DI RICAMBIO spare parts kit
205.1915.5	DIN 43650 A - IP67	Costampato Integrated moulded	205.302.60
205.1915.5 A	DIN 43650 A ISO 4400 PG9	NO -	205.302.60
205.1915.5 B	-	-	205.302.60