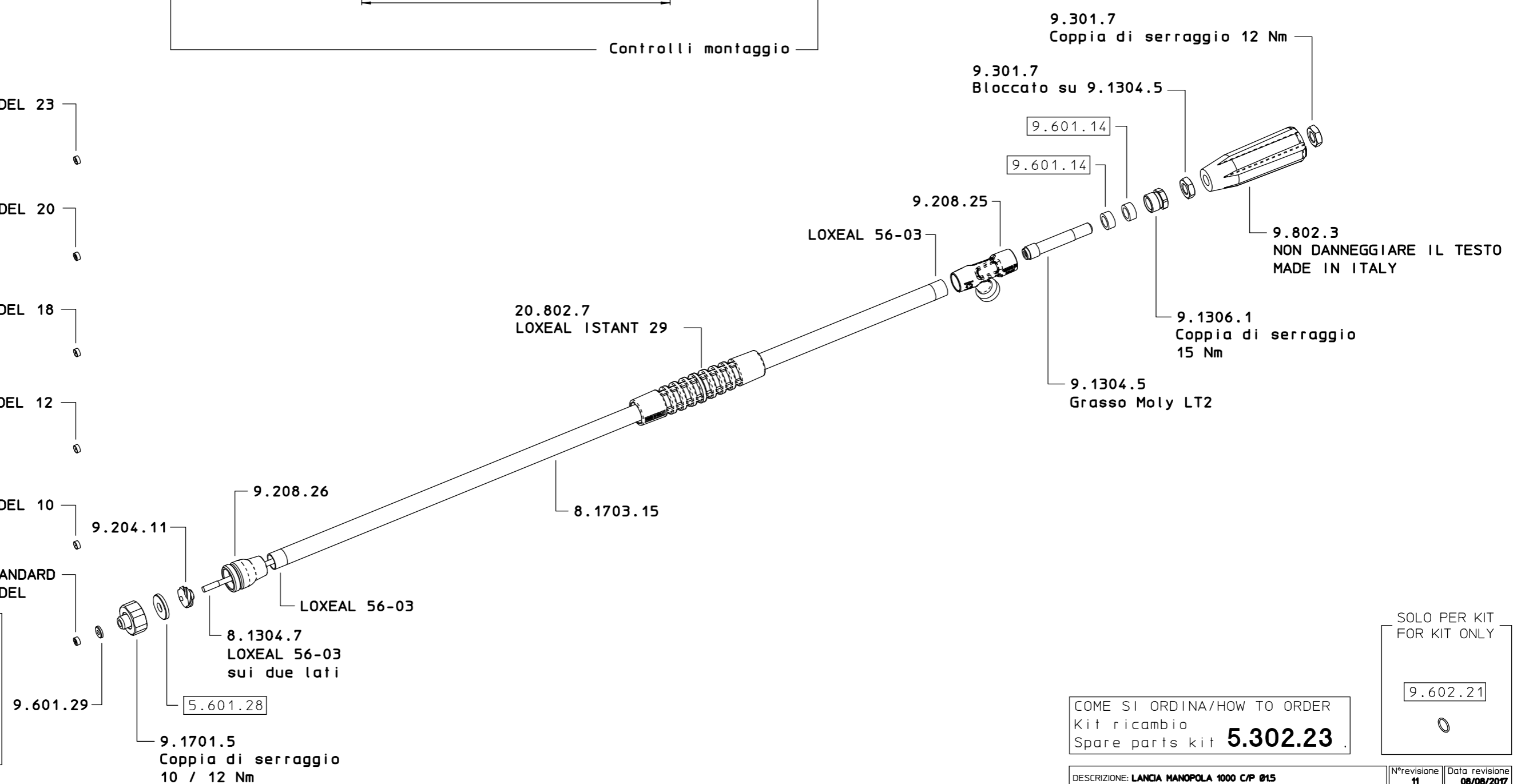
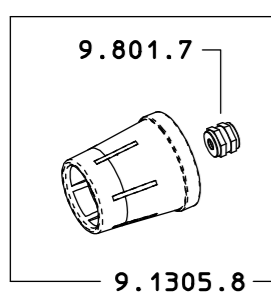


8.901.54  
 8.901.54 10  
 8.901.54 12  
 8.901.54 18  
 8.901.54 20  
 8.901.54 23

- 9.801.17  
Ø2.3 VARIANTE / MODEL 23
- 9.801.16  
Ø2.0 VARIANTE / MODEL 20
- 9.801.15  
Ø1.8 VARIANTE / MODEL 18
- 9.801.13  
Ø1.2 VARIANTE / MODEL 12
- 9.801.12  
Ø1.0 VARIANTE / MODEL 10
- 9.801.14  
Ø1.5 VARIANTE STANDARD  
STANDARD MODEL



COME SI ORDINA/HOW TO ORDER  
 Kit ricambio  
 Spare parts kit **5.302.23**

SOLO PER KIT  
 FOR KIT ONLY

9.602.21