



## [ M172 - M173 VALVES



### SPECIFICATION

Compact & modular section valves for boom and orchard sprayers trigger operated. The orientable black trigger allows to optimize the installation on the machine. 172.1903.10 and 172.1903.10 G are used to create modular groups of valves or to match M200 groups of valves. Codes 172.1903.10 K, 173.1903.14 and 173.1903.15 are kits used to increase the number of exits on M170 and M170 OT control units.

### FEATURES

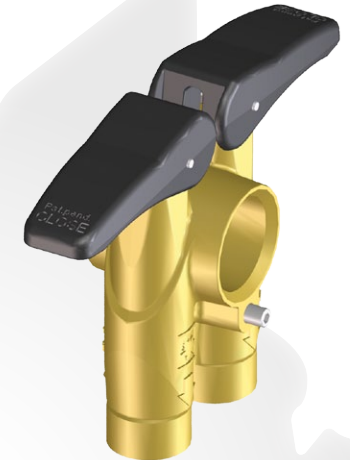
- high resistance plastic materials, brass, stainless steel, FPM/PTFE seals;
- max operating pressure: 40 bar / 580 psi;
- max flow rate: 80 l/min [21 USGal/min] with 1.5 bar [22 psi] pressure drop.

### VERSIONS

- 172.1903.10** two controlled ways - without grub screw.
- 172.1903.10 G** two controlled ways - complete with grub screw.
- 172.1903.10 K** two controlled ways kit for M170 controls; includes: 3/4" BSP plug + O Ring and 3/4" BSP M200 nipple + O Ring.
- 173.1903.14** one controlled way and one always opened right hand kit for M170 controls; includes: 3/4" BSP plug + O Ring and 3/4" BSP M200 nipple + O Ring.
- 173.1903.15** one controlled way and one always opened left hand kit for M170 controls; includes: 3/4" BSP plug + O Ring and 3/4" BSP M200 nipple + O Ring



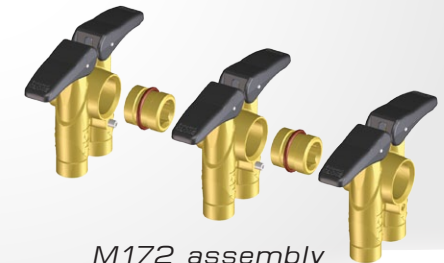
172.1903.10



172.1903.10 G



M173 valves assembly on M170 control units



M172 assembly

For information or offer please contact our Export Dept.:

[claudiacalzoni@braglia.it](mailto:claudiacalzoni@braglia.it)  
sales department

[giorgiozecchini@braglia.it](mailto:giorgiozecchini@braglia.it)  
area manager