



FILTRI - COMPONENTI STRAINERS - PARTS



73.508.9



256.1901.2



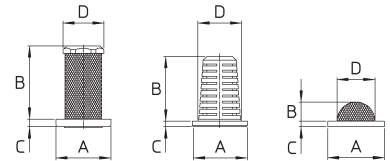
256.508.11




256.508.12



256.508.13
256.508.14



COME SI ORDINA / HOW TO ORDER

CODICE code	VERSIONE model	MESH	MATERIALI materials	A mm	B mm	C mm	D mm	
73.508.9	A fessura Slotted	25 mesh	PA66	14.5	17	1.5	11.3	25
256.1901.2	Antigoccia Check valve	40 mesh	PA - Acciaio inox PA - Stainless steel	14.7	20	2	10.8	25
256.508.11 blu-blue	Filtro Strainer	50 mesh	PA - Acciaio inox PA - Stainless steel	15	19.3	2	11.5	25
256.508.12 rosso-red	Filtro Strainer	100 mesh	PA - Acciaio inox PA - Stainless steel	15	19.3	2	11.5	25
256.508.13 rosso-red	A cupola Cup strainer	32 mesh	PA - Acciaio inox PA - Stainless steel	15	5.5	2	10	25
256.508.14 nero-black	A cupola Cup strainer	50 mesh	PA - Acciaio inox PA - Stainless steel	15	5.5	2	10	25



256.208.2



256.605.7



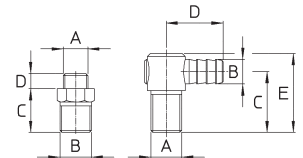
257.208.72



258.208.77



75.301.23



256.208.2
Pressione di esercizio max.: 40 bar
Peso: 26 g
Materiali: ottone nichelato
Max. operating pressure.: 40 bar / 600 psi
Weight: 26 g / 0.9 oz
Materials: nickel plated brass


256.605.7
Pressione di esercizio max.: 40 bar
Peso: 15 g
Materiali: ottone nichelato
Max. operating pressure.: 40 bar / 600 psi
Weight: 15 g / 0.5 oz
Materials: nickel plated brass

75.301.23
Peso: 20 g
Materiali: ottone
Weight:
20 g / 0.7 oz
Materials: brass

257.208.72
Pressione di esercizio max.: 20 bar
Peso: 70 g
Materiali: ottone
Max. operating pressure.: 20 bar / 300 psi
Weight: 70 g / 2.5 oz
Materials: brass

258.208.77
Pressione di esercizio max.: 20 bar
Peso: 60 g
Materiali: ottone
Max. operating pressure.: 20 bar / 300 psi
Weight: 60 g / 2.1 oz
Materials: brass

COME SI ORDINA / HOW TO ORDER

CODICE code	A filettatura - thread	B mm	C mm	D mm	E mm	
256.208.2	G1/4M. - 1/4"BSPM.	G3/8M. - 3/8"BSPM.	23	8	-	25
256.605.7	G3/8F. - 3/8"BSPF.	-	-	-	-	25
257.208.72	G3/8M. - 3/8"BSPM.	Ø13	32	30	42	25
258.208.77	G3/8M. - 3/8"BSPM.	Ø13	32	30	42	25
75.301.23	G3/8F. - 3/8"BSPF.	-	-	-	-	25



UGELLI
TIPS