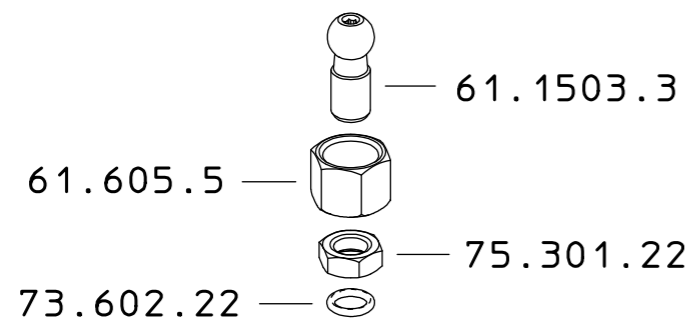
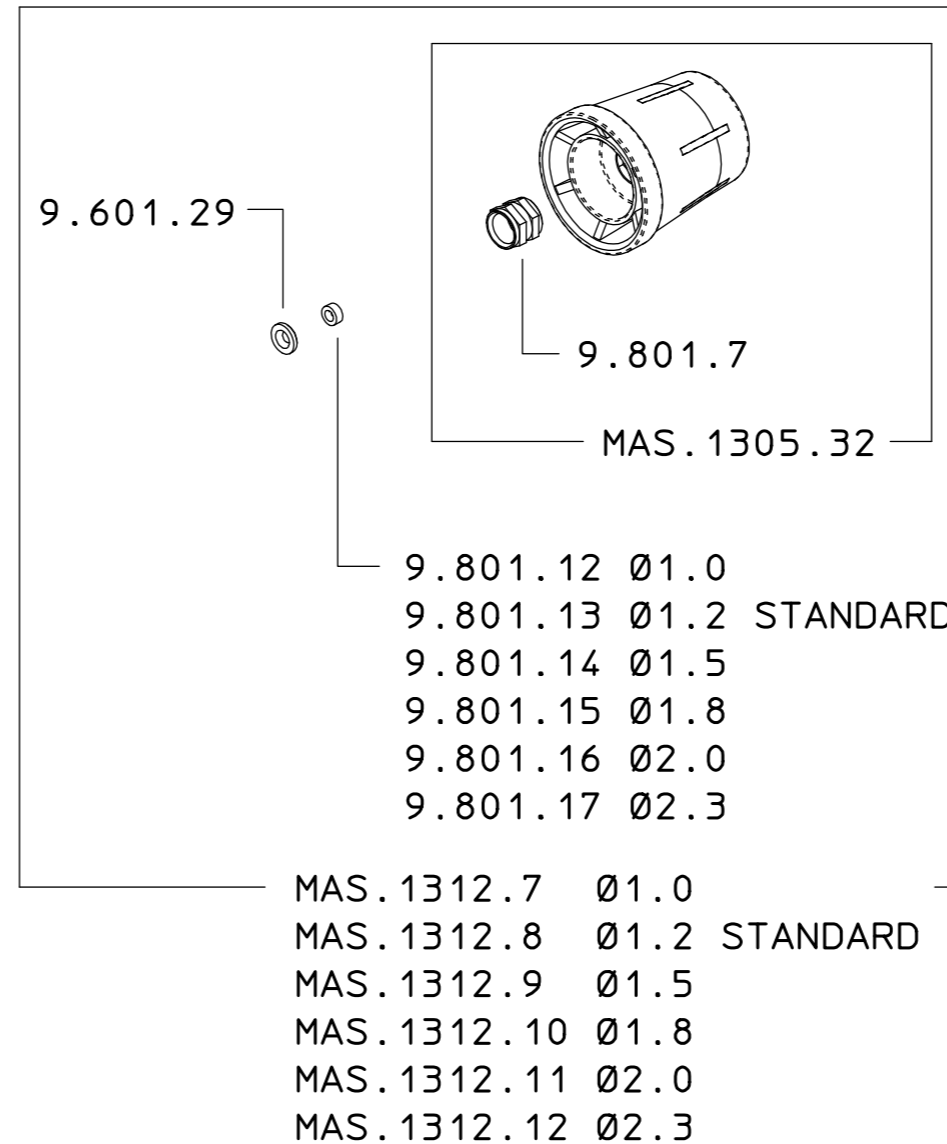
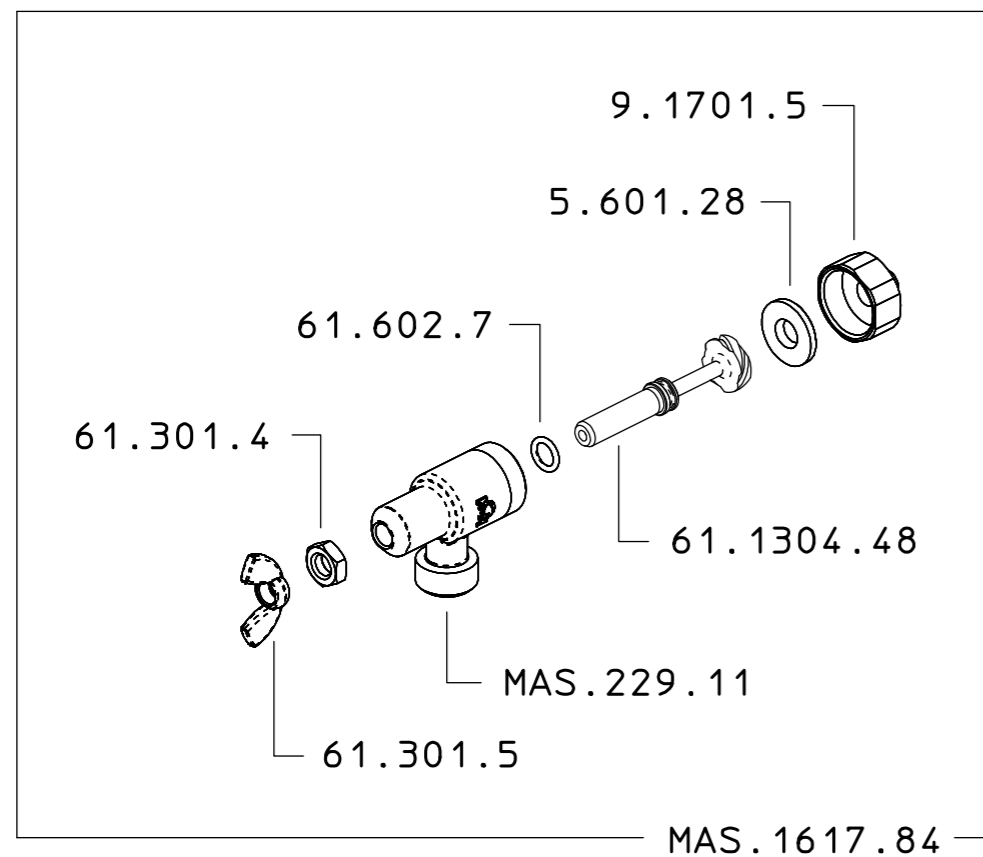


MAS.610.12
 MAS.610.12 10
 MAS.610.12 15
 MAS.610.12 18
 MAS.610.12 20
 MAS.610.12 23

Assemblare 9.1701.5 completa di 5.601.28
 su MAS.229.11 con coppia 10/11 Nm

Assemble 9.1701.5 complete with 5.601.28
 on MAS.229.11 with 10/11 Nm torque



- MAS.111.35 Ø1.2 STANDARD
- MAS.111.36 Ø1.0
- MAS.111.37 Ø1.5
- MAS.111.38 Ø1.8
- MAS.111.39 Ø2.0
- MAS.111.40 Ø2.3