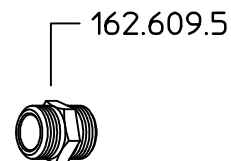
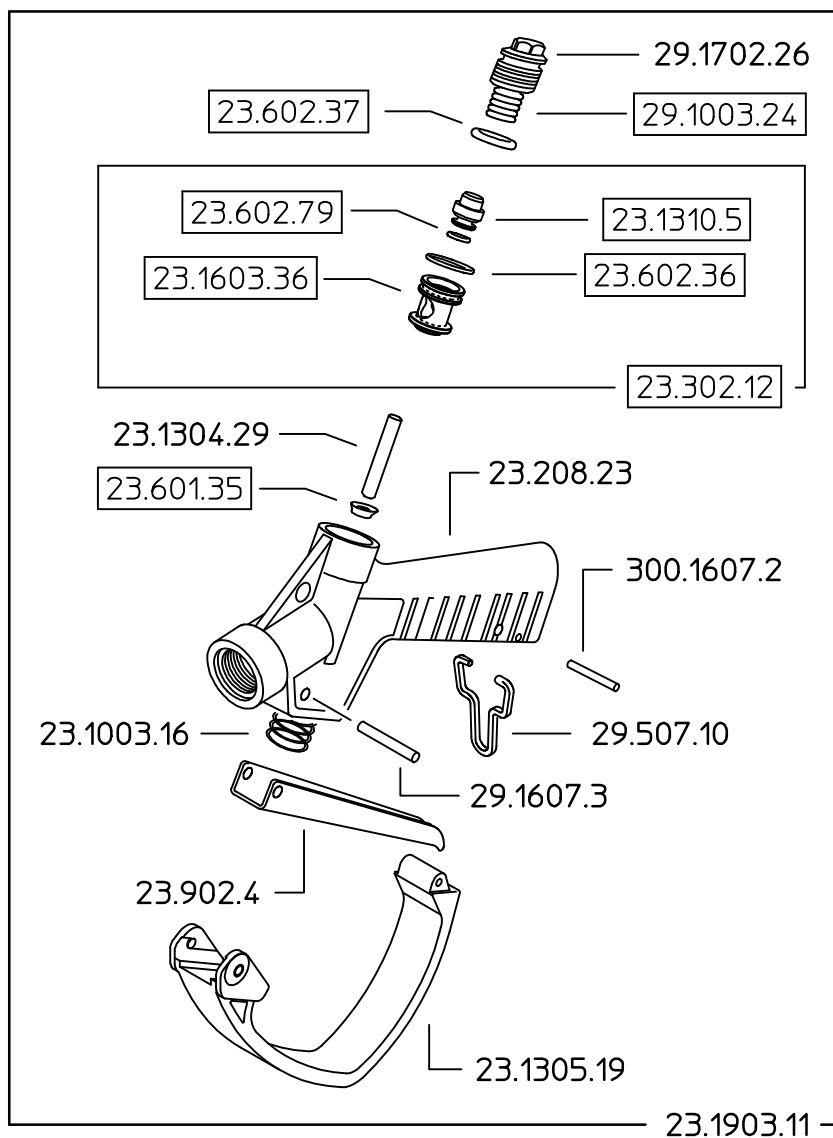


23.208.84



Come si ordina/How to order
 Solo Kit tenuta **23.302.12.**
 Seat kit only

Come si ordina/How to order
 Kit ricambio completo **23.302.26.**
 Complete spare parts kit

Percorso file 3D:			
DENOMINAZIONE: Valvola leva G1/2M.			N°revisione 05
			Data revisione: 11/03/05
	Tel. ++39 0522 340648	STE	RTE
	Fax. ++39 0522 345025		
I-42029 Masone (REGGIO EMILIA)-ITALY-UE Email braglia@braglia.it			Dis.N°/Codice 23.208.84