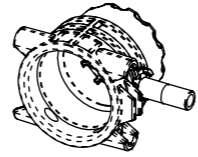
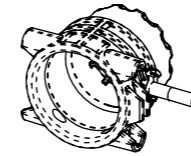


06 VERSIONI B / C
06 B / C MODELS



288.208.159

04 VERSIONI STANDARD / A
04 STANDARD / A MODELS



288.218.21

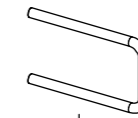
288.1903.22
288.1903.22 A
288.1903.22 B
288.1903.22 C

3.0 BAR VERSIONI A / C
3.0 BAR A / C MODELS



288.1003.9

288.508.1

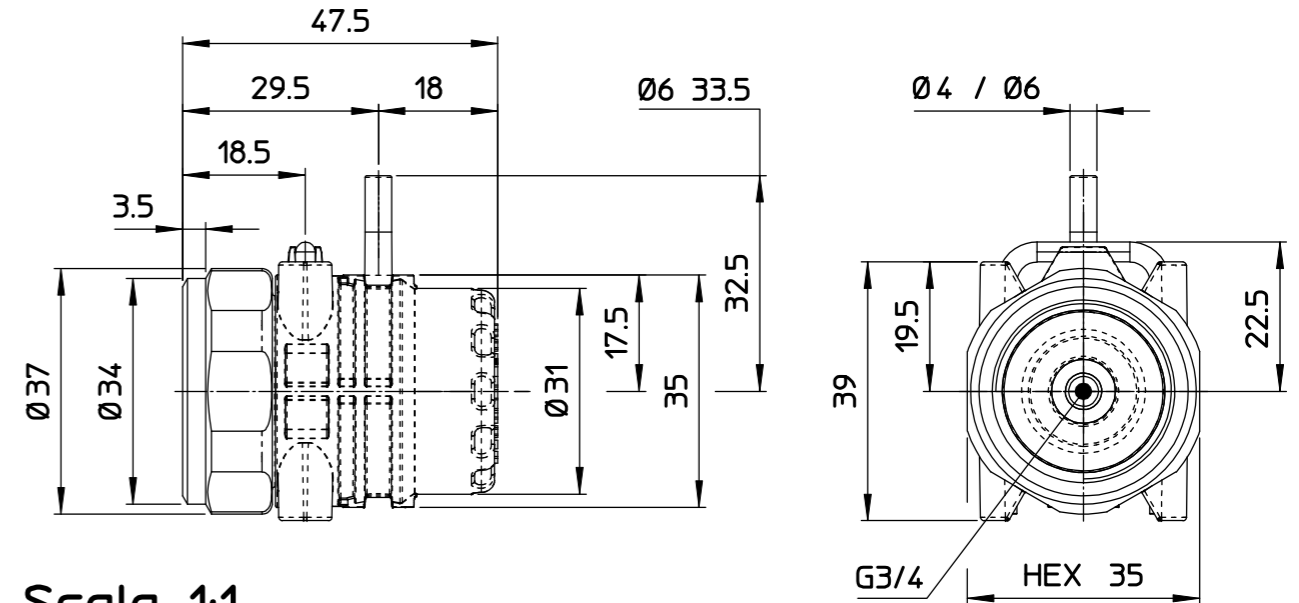


174.507.24

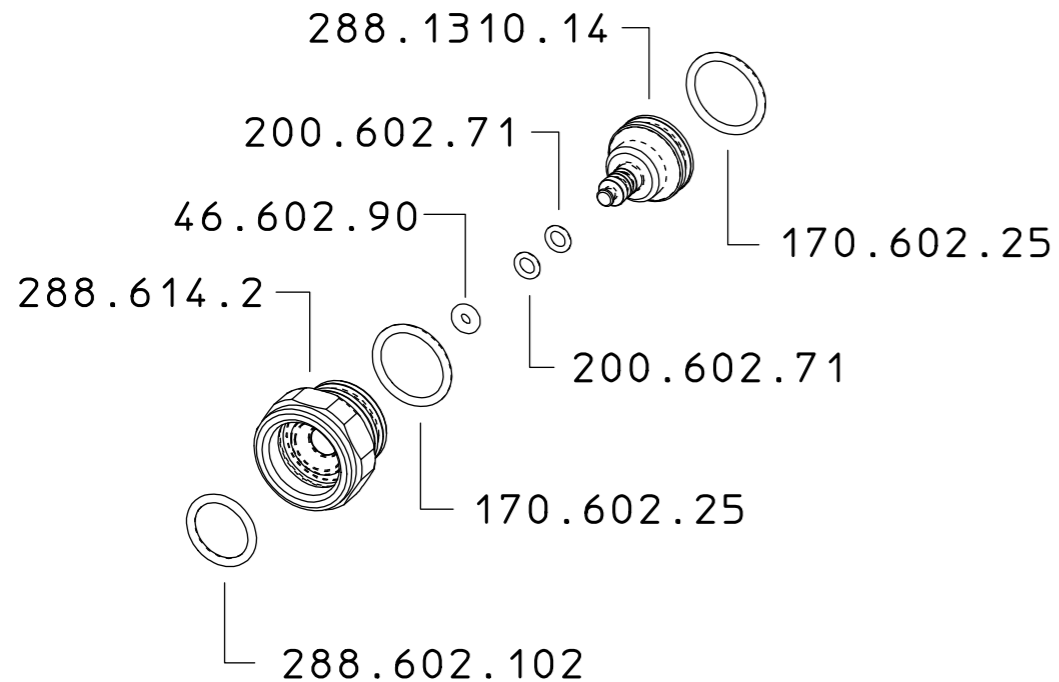
2.2 BAR VERSIONI STANDARD / B
2.2 BAR STANDARD / B MODELS



288.1003.46



Scala 1:1



LUBRIFICARE LEGGERMENTE LE TENUTE ED I COMPONENTI SOGGETTI A SCORRIMENTO

DESCRIZIONE: VALVOLA AIR STOP 1X04 2.2 BAR

N°revisione 05
Data revisione 17/03/2023

Braglia SRL
Tel. +39 0522 340648
Fax. +39 0522 345025
I-42122 REGGIO EMILIA - ITALY - UE Email tecnico@braglia.it

DISEGNATO A.BRAGLIA
APPROVATO G.BRAGLIA

Dis.N°/Codice
288.1903.22