



## M74

POSIZIONAMENTO  
E TENUTA SENZA COLLANTI  
ADJUST NOZZLE POSITION  
AND SEAL WITHOUT BONDING



74.610.109  
74.610.109 15



74.610.111  
74.610.111 15



74.610.115



G1/4M.-1/4"BSPPM  
Dado con O Ring  
Nut with O Ring



256.605.7  
G3/8 3/8"BSPPF



74.610.118



74.610.116



74.610.108



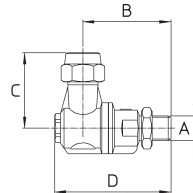
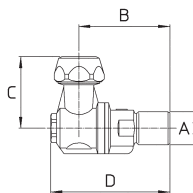
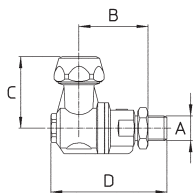
73.605.68  
11/16-16 UN



73.605.27  
G3/8 3/8"BSPPF



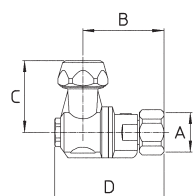
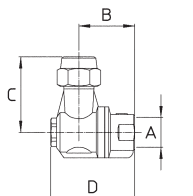
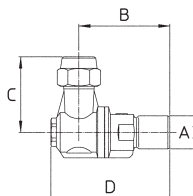
74.610.19



73.605.28  
11/16-16 UN



75.605.46 Ø15  
75.605.47 Ø18



**Standard:** versioni Ø18 e Ø15 complete di ghiera - ugello non compreso  
versioni G3/8 e 11/16-16UN complete di ghiera - ugello non compreso - opzioni  
con filtro

Pressione di esercizio max.: 40 bar  
Peso: G1/4M. 160 g - G1/4F. 160 g - 1/4"NPTF. 135 g

**Materiali:** ottone - acciaio inox - NBR - PVC

**Impiego:** su atomizzatori. Due posizioni "APERTO" inclinate 15° dalla verticale. Ogni posizione è segnalata da uno scatto.

**Standard:** Ø18 and Ø15 models with cap - spray tip not included  
3/8"BSPP and 11/16-16UN models with cap - spray tip not included - strainer options


Max. operating pressure.: 40 bar / 600 psi  
Weight: 1/4"BSPP. 160 g / 5.5 oz. - 1/4"BSPPF. 160 g / 5.5 oz - 1/4"NPTF. 135 g / 4.5 oz

**Materials:** brass - stainless steel - Buna N - PVC

**Use:** on air blast sprayers. Two "OPEN" positions at ±15° from vertical. A click point out each position.



**COME SI ORDINA / HOW TO ORDER**

CODICE <i>code</i>	GHIERA <i>cap</i>	PER UGELLI <i>for spray tips</i>	FILTRO <i>strainer</i>	A	B mm	C mm	D mm		KIT RICAMBIO <i>spare parts kit</i>																																																																																																																				
74.610.109	Ø18-Ch24	Ø18 KIT	-	G1/4M- 1/4"BSPM.	37	38	52	10	70.302.27																																																																																																																				
74.610.109 15	Ø15-Ch24	ATR/TVI	-							74.610.111	Ø18-Ch24	Ø18 KIT	-	G1/4F- 1/4"BSPF.	48	38	63	10	70.302.27	74.610.111 15	Ø15-Ch24	ATR/TVI	-	74.610.115	G3/8M-Ch20	Ø15 KIT	X	G1/4M- 1/4"BSPM.	37	40	52	10	70.302.27	74.610.115 A	G3/8M-Ch20	Ø15 KIT	-	74.610.115 B	G3/8M. ALETTATA 3/8"BSPM. WINGED	Ø15 KIT	-	74.610.115 C	G3/8M. ALETTATA 3/8"BSPM. WINGED	Ø15 KIT	X	74.610.108	G3/8M-Ch20	Ø15 KIT	X	G1/4F- 1/4"BSPF.	48	40	63	10	70.302.27	74.610.108 A	G3/8M-Ch20	Ø15 KIT	-	74.610.108 B	G3/8M. ALETTATA 3/8"BSPM. WINGED	Ø15 KIT	-	74.610.108 C	G3/8M. ALETTATA 3/8"BSPM. WINGED	Ø15 KIT	X	74.610.118	11/16 16UN-Ch21	Ø15 KIT disc+core	X	G1/4M- 1/4"BSPM.	37	40	52	10	70.302.27	74.610.118 A	11/16 16UN-Ch21	Ø15 KIT disc+core	-	74.610.118 B	11/16 16UN ALETTATA WINGED	Ø15 KIT disc+core	-	74.610.118 C	11/16 16UN ALETTATA WINGED	Ø15 KIT disc+core	X	74.610.116	11/16 16UN-Ch21	Ø15 KIT disc+core	X	1/4NPTF.	30	40	45	10	70.302.27	74.610.116 A	11/16 16UN-Ch21	Ø15 KIT disc+core	-	74.610.116 B	11/16 16UN ALETTATA WINGED	Ø15 KIT disc+core	-	74.610.116 C	11/16 16UN ALETTATA WINGED	Ø15 KIT disc+core	X	74.610.19	Ø15-Ch24	ATR/TVI	-	M18x1.5F-Ø9	42	38	57	50	70.302.27				
74.610.111	Ø18-Ch24	Ø18 KIT	-	G1/4F- 1/4"BSPF.	48	38	63	10	70.302.27																																																																																																																				
74.610.111 15	Ø15-Ch24	ATR/TVI	-							74.610.115	G3/8M-Ch20	Ø15 KIT	X	G1/4M- 1/4"BSPM.	37	40	52	10	70.302.27	74.610.115 A	G3/8M-Ch20	Ø15 KIT	-	74.610.115 B	G3/8M. ALETTATA 3/8"BSPM. WINGED	Ø15 KIT	-							74.610.115 C	G3/8M. ALETTATA 3/8"BSPM. WINGED	Ø15 KIT	X	74.610.108	G3/8M-Ch20	Ø15 KIT	X	G1/4F- 1/4"BSPF.	48	40	63	10	70.302.27	74.610.108 A	G3/8M-Ch20							Ø15 KIT	-	74.610.108 B	G3/8M. ALETTATA 3/8"BSPM. WINGED	Ø15 KIT	-	74.610.108 C	G3/8M. ALETTATA 3/8"BSPM. WINGED	Ø15 KIT	X	74.610.118	11/16 16UN-Ch21	Ø15 KIT disc+core	X	G1/4M- 1/4"BSPM.	37							40	52	10	70.302.27	74.610.118 A	11/16 16UN-Ch21	Ø15 KIT disc+core	-	74.610.118 B	11/16 16UN ALETTATA WINGED	Ø15 KIT disc+core	-	74.610.118 C	11/16 16UN ALETTATA WINGED	Ø15 KIT disc+core	X							74.610.116	11/16 16UN-Ch21	Ø15 KIT disc+core	X	1/4NPTF.	30	40	45	10	70.302.27	74.610.116 A	11/16 16UN-Ch21	Ø15 KIT disc+core	-	74.610.116 B	11/16 16UN ALETTATA WINGED	Ø15 KIT disc+core	-	74.610.116 C	11/16 16UN ALETTATA WINGED	Ø15 KIT disc+core	X	74.610.19	Ø15-Ch24	ATR/TVI	-
74.610.115	G3/8M-Ch20	Ø15 KIT	X	G1/4M- 1/4"BSPM.	37	40	52	10	70.302.27																																																																																																																				
74.610.115 A	G3/8M-Ch20	Ø15 KIT	-																																																																																																																										
74.610.115 B	G3/8M. ALETTATA 3/8"BSPM. WINGED	Ø15 KIT	-																																																																																																																										
74.610.115 C	G3/8M. ALETTATA 3/8"BSPM. WINGED	Ø15 KIT	X																																																																																																																										
74.610.108	G3/8M-Ch20	Ø15 KIT	X	G1/4F- 1/4"BSPF.	48	40	63	10	70.302.27																																																																																																																				
74.610.108 A	G3/8M-Ch20	Ø15 KIT	-																																																																																																																										
74.610.108 B	G3/8M. ALETTATA 3/8"BSPM. WINGED	Ø15 KIT	-																																																																																																																										
74.610.108 C	G3/8M. ALETTATA 3/8"BSPM. WINGED	Ø15 KIT	X																																																																																																																										
74.610.118	11/16 16UN-Ch21	Ø15 KIT disc+core	X	G1/4M- 1/4"BSPM.	37	40	52	10	70.302.27																																																																																																																				
74.610.118 A	11/16 16UN-Ch21	Ø15 KIT disc+core	-																																																																																																																										
74.610.118 B	11/16 16UN ALETTATA WINGED	Ø15 KIT disc+core	-																																																																																																																										
74.610.118 C	11/16 16UN ALETTATA WINGED	Ø15 KIT disc+core	X																																																																																																																										
74.610.116	11/16 16UN-Ch21	Ø15 KIT disc+core	X	1/4NPTF.	30	40	45	10	70.302.27																																																																																																																				
74.610.116 A	11/16 16UN-Ch21	Ø15 KIT disc+core	-																																																																																																																										
74.610.116 B	11/16 16UN ALETTATA WINGED	Ø15 KIT disc+core	-																																																																																																																										
74.610.116 C	11/16 16UN ALETTATA WINGED	Ø15 KIT disc+core	X																																																																																																																										
74.610.19	Ø15-Ch24	ATR/TVI	-	M18x1.5F-Ø9	42	38	57	50	70.302.27																																																																																																																				

