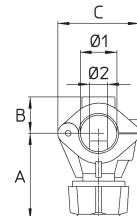
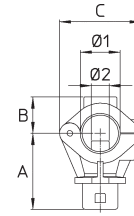




M290 - M295

290.700.3
290.700.3 20295.700.4
295.700.4 20GHIERA / CAP
295.605.38

- M290** Attacco a baionetta: completo di cavallotto montato, vite autofilettante inox, O Ring.
Ghiera ed ugello non compresi
- M295** Attacco G3/8M: completo di cavallotto montato, vite autofilettante inox, O Ring, ghiera G3/8.
Ugello non compreso

Cavallotto con sede per vite / dado UNI - ISO M6
Versioni: per tubi Ø20 e 1/2" (Ø21.3) / Ø22

Pressione di esercizio max.: 20 bar
Peso: M290 25 g - M295 32 g

Materiali: PA66 rinforzato con fibra di vetro

Impiego: su barre diserbanti. Montaggio rapido. Ingombri ridotti. Eccellente resistenza alla pressione ed agli urti.

M290 *Quick connection: with clamp, stainless steel self tapping screw, O Ring.*

Cap and spray tip not included

M295 *3/8" BSPM. thread: with clamp, stainless steel self tapping screw, O Ring, 3/8" BSP cap. Spray tip not included*

Clamp with seat for ISO M6 nut / screw
Models: for Ø20 and 1/2" (Ø21.3) / Ø22 pipes


Max. operating pressure.: 20 bar / 300 psi
Weight: M290 25 g / 0.85 oz - M295 32 g / 1.1 oz

Materials: PA66 fiberglass reinforced

Use: on crop protection booms. Easy mounting. Compact. Pressure and shock proof.


M290

COME SI ORDINA / HOW TO ORDER

CODICE code	ATTACCO connection	Ø1 mm	Ø2 mm	A mm	B mm	C mm	
290.700.3	Baionetta - Quick	1/2" (Ø21.3) - Ø22	Ø7	40	19	43	25
290.700.3 20	Baionetta - Quick	Ø20	Ø7	40	19	43	25

M295

COME SI ORDINA / HOW TO ORDER

CODICE code	ATTACCO connection	Ø1 mm	Ø2 mm	A mm	B mm	C mm	
295.700.4	G3/8 - 3/8" BSPM	1/2" (Ø21.3) - Ø22	Ø7	47	19	43	25
295.700.4 20	G3/8 - 3/8" BSPM	Ø20	Ø7	47	19	43	25



PAGE 78



PAGE 68

UGELLI
TIPS

PAGE 87