



# M84



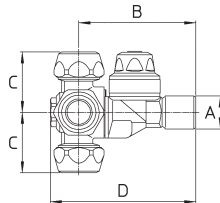
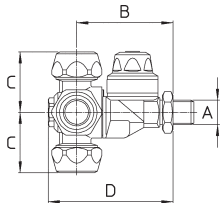
84.617.22



84.617.23



84.617.24



POSIZIONAMENTO  
E TENUTA SENZA COLLANTI  
ADJUST NOZZLE POSITION  
AND SEAL WITHOUT BONDING



G1/4M.-1/4" BSPM  
Dado con O Ring  
Nut with O Ring



Kit ghiera AD/AC  
AD/AC cap kit

**Standard completo di ghiera - ugelli non compresi**

Pressione di esercizio max.: 30 bar

Peso: G1/4M. 310 g - G1/4F. 310 g - G3/8M. 325 g

**Materiali:** ottone - acciaio inox - NBR - FPM - PVC

**Impiego:** su atomizzatori. Tre ugelli selezionabili con una posizione di chiusura. Antigoccia resistente ed efficace a bassa e ad alta pressione.

**Standard with caps - spray tips not included**


Max. operating pressure.: 30 bar / 435 psi

Weight: 1/4" BSPM. 310 g / 11oz. - 1/4" BSPF. 310 g / 11oz - 3/8" BSPM. 325 g / 11.5 oz

**Materials:** brass - stainless steel - Buna N - FKM - PVC

**Use:** on air blast sprayers. Three rollover spray tips with one shut off position. Check valve assures efficient and long lasting operations at low and high pressures.

## COME SI ORDINA / HOW TO ORDER

CODICE code	GHIERA cap	PER UGELLI for spray tips	A	B mm	C mm	D mm		KIT RICAMBIO spare parts kit
84.617.22	3xATR/TVI	ATR/TVI	G1/4M. 1/4" BSPM	51	32	66	10	84.302.29
84.617.22 A	1xØ18-2xØ15	Ø18 KIT-ATR/TVI						
84.617.22 B	2xØ18-1xØ15	Ø18 KIT-ATR/TVI						
84.617.22 C	3xØ18	Ø18 KIT						
84.617.22 D	3xAD/AC	AD/AC						
84.617.22 E	2xAD/AC-1xØ18	AD/AC-Ø18 KIT						
84.617.22 F	1xAD/AC-2xØ18	AD/AC-Ø18 KIT						
84.617.22 G	2xAD/AC-1xØ15	AD/AC-ATR/TVI						
84.617.22 H	1xAD/AC-2xØ15	AD/AC-ATR/TVI						
84.617.23	3xATR/TVI	ATR/TVI	G3/8M.-G1/8F. 3/8" BSPM. 1/8" BSPF.	51	32	66	10	84.302.29
84.617.23 A	1xØ18-2xØ15	Ø18 KIT-ATR/TVI						
84.617.23 B	2xØ18-1xØ15	Ø18 KIT-ATR/TVI						
84.617.23 C	3xØ18	Ø18 KIT						
84.617.23 D	3xAD/AC	AD/AC						
84.617.23 E	2xAD/AC-1xØ18	AD/AC-Ø18 KIT						
84.617.23 F	1xAD/AC-2xØ18	AD/AC-Ø18 KIT						
84.617.23 G	2xAD/AC-1xØ15	AD/AC-ATR/TVI						
84.617.23 H	1xAD/AC-2xØ15	AD/AC-ATR/TVI						
84.617.24	3xATR/TVI	ATR/TVI	G1/4F. 1/4" BSPF.	62	32	77	10	84.302.29
84.617.24 A	1xØ18-2xØ15	Ø18 KIT-ATR/TVI						
84.617.24 B	2xØ18-1xØ15	Ø18 KIT-ATR/TVI						
84.617.24 C	3xØ18	Ø18 KIT						
84.617.24 D	3xAD/AC	AD/AC						
84.617.24 E	2xAD/AC-1xØ18	AD/AC-Ø18 KIT						
84.617.24 F	1xAD/AC-2xØ18	AD/AC-Ø18 KIT						
84.617.24 G	2xAD/AC-1xØ15	AD/AC-ATR/TVI						
84.617.24 H	1xAD/AC-2xØ15	AD/AC-ATR/TVI						



UGELLI  
TIPS

PAGE 87